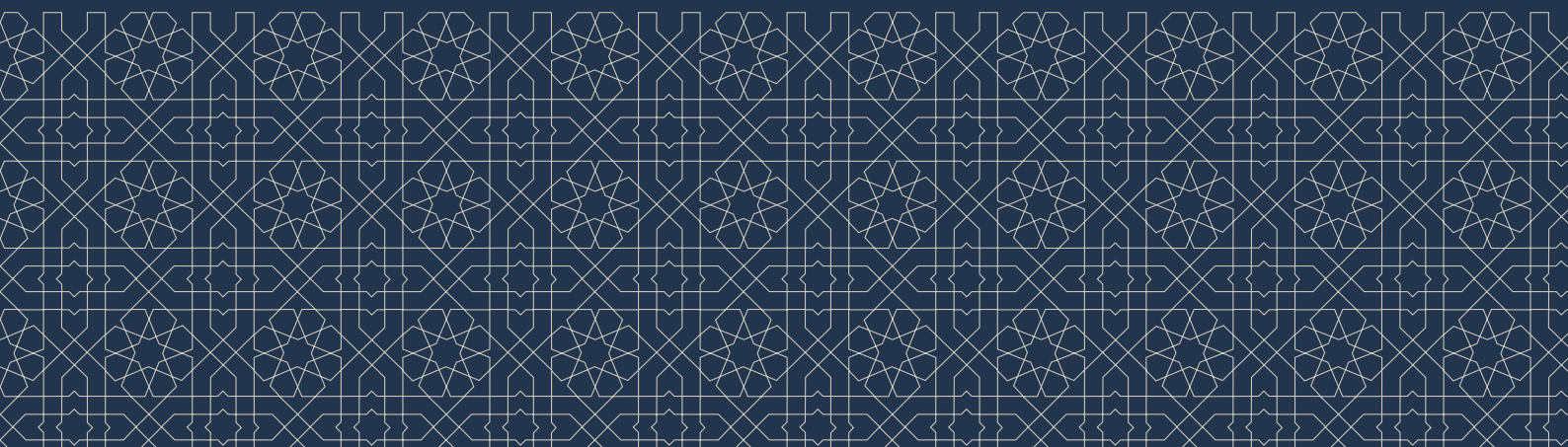
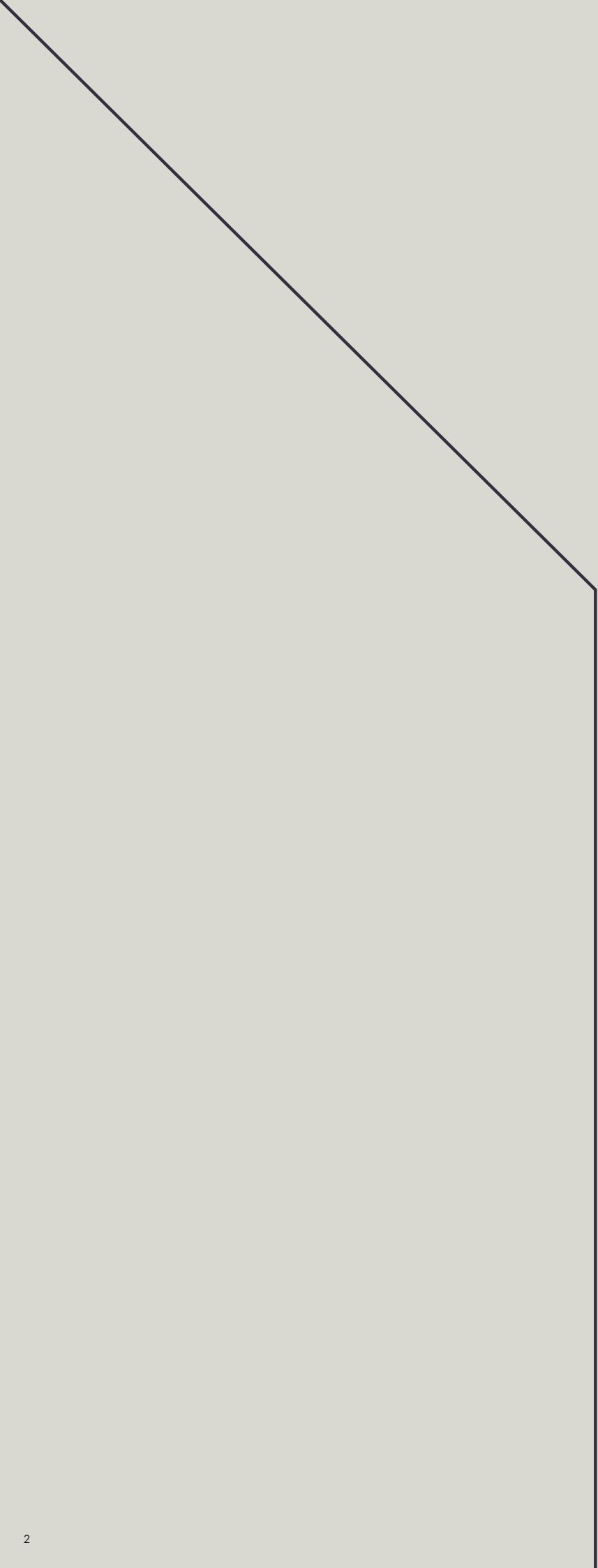


ROKSAN

Caspian Series 4G





Caspian Series 4G is built around the concept of total high-fidelity performance. A classic range that never forgets its aim is to deliver a breath-taking sonic performance, coupled with true flexibility and versatility. Designed for the user.

Where performance and intuitive design meet.

Caspian Series 4G delivers total high-fidelity performance. Every part of these four unique products has been developed to deliver on that promise. Comprising Streaming Amplifier, Integrated Amplifier, Streaming Pre-Amplifier and Power Amplifier, the Caspian Series 4G provides all the options required for total performance.

Monitor Audio Group's MaestroUnite app ensures both flexibility and ease of optimisation. It understands what components comprise a system and calculates the ideal setup in order to deliver the best possible performance. It does the hard work, so the user doesn't have to.



Caspian Series 4G.
Designed for the user.



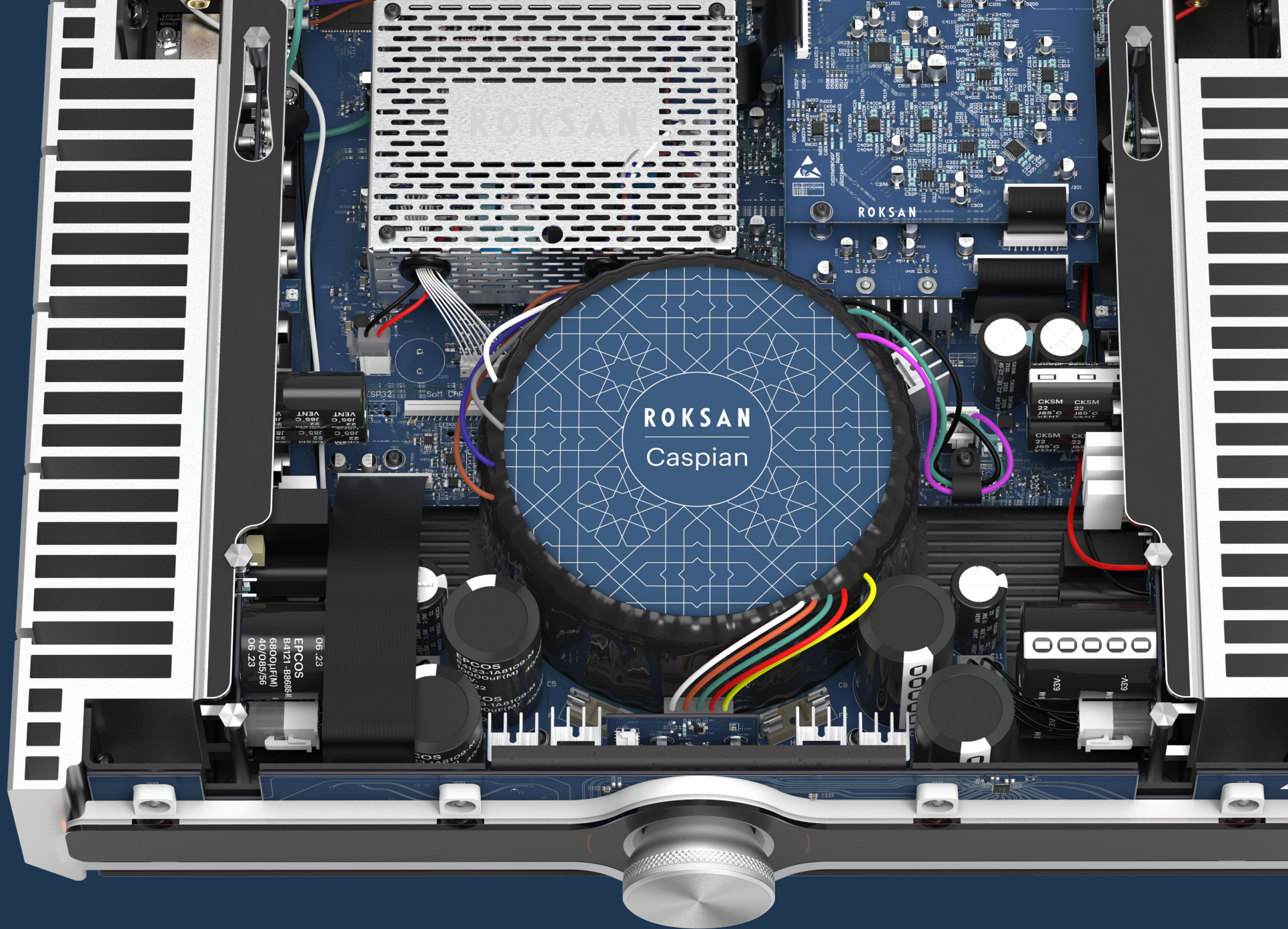
The starting point of acoustic excellence.

The all-new Caspian Series 4G is a more-than-worthy addition to Roksan's hallowed Caspian lineage. It successfully builds on the unique qualities that make Caspian highly respected electronics series.

Caspian Series 4G comprises four models, each of which builds on an advanced electronics platform and can integrate with each other and the system they sit within. Highly optimisable, and packed full of leading-edge engineering, Caspian Series 4G, extends the envelope of performance. Its sleek, modern design houses advanced electronics and powerful streaming and amplification. A truly versatile range, Caspian Series 4G will enhance any system with exceptional power, high-fidelity sound and intuitive usability.

Caspian Series 4G is an outstanding way to experience true high-fidelity audio. Designed for the user. Listen Again.





Innovative Architecture Built-in

1

BluOS

The Caspian Streaming Amplifier and Streaming Pre-Amplifier utilises the BluOS platform, providing users with access to limitless music via the world's premium wireless music streaming services.

2

Rapture DAC Architecture

Roksan's new Rapture DAC allows both Caspian Series 4G models to extract much greater levels of information. It's so good Roksan does it twice through the amplifier's dual-mono topology.

3

Ultra-High-Res Volume Control

Caspian Series 4G utilises a hybrid digital-analogue volume control algorithm. This hybrid approach encapsulates the best of both digital and analogue worlds and ensures a low noise floor and silky-smooth volume transitions.

4

Euphoria Amplification

Roksan's Euphoria amplification excels in power and finesse. With Caspian Series 4G, Roksan has evolved the AB topology, with individual power supplies for the current and voltage amplifiers. This reduced interaction delivers purer, more detailed and cleaner sound.

5

Chassis Design

Hand-built by technicians in Monitor Audio Group HQ in Rayleigh, Essex, within Caspian Series 4G's sleek elegant profile all the components are expertly housed to ensure perfect signal transfer for pristine sound reproduction.

6

Internal Antenna - Bluetooth and Wi-Fi

Internal, fully custom-built antennas feature reflectors to protect sensitive circuits from interference. This ensures Caspian Series 4G looks smart, while also providing the best possible Wi-Fi connection with a user's router.

7

Powerful DSP Engine

Through the MaestroUnite app, Caspian Series 4G's intelligent DSP engine optimises a user's listening experience through the application of four key technologies: Intelligent Tone, Intelligent Boundary, Intelligent Speaker and Intelligent Phono.

8

Display

Caspian Series 4G's new mono colour high-contrast OLED display frames the intuitive single point of control user interface more clearly and larger than ever before. Customisable input icons allow easy source selection, while a new progress indicator displays features such as track length.

Access Lossless Music and Wirelessly Stream throughout Your House

BluOS enabled, premium streaming up to 24-bit/192kHz

The Caspian Streaming Amplifier and Streaming Pre-Amplifier utilises BluOS premium multi-room audio streaming. The world's premier wireless ecosystem, it provides users with access to limitless music via the world's most popular streaming services, and the ability to wirelessly stream music at lightning-fast speeds with no lag and zero loss in sound quality.

Users can stream up to 64 zones of high-resolution audio, in quality up to 24-bit, 192kHz. Using BluOS also means effortless browsing, and access to locally stored music collections as well as streaming services.

With the Caspian Streaming Amplifier and Streaming Pre-Amplifier, users can enjoy a fully immersive whole-home enhanced listening experience in true high-fidelity.

BluOS®





Rapture: Our DAC Architecture, Bespoke For Analogue

An advanced topology for the accurate reproduction of the original recording

Caspian Series 4G features Rapture DAC technology; a differential current-conveyor topology. Roksan has designed it differently, because it's better this way – it allows more information to be extracted for the best possible analogue reproduction.

This topology has several measurable advantages over the traditional approach to digital to analogue reconstruction using op-amp ICs. The current-conveyor has superior gain-bandwidth characteristics essential for faithful high-resolution audio reproduction.

Moreover, despite being discrete (no off-the-shelf solution exists) it relies on a single circuit element for gain matching. Therefore, it can be utilised effectively in a discrete-component level solution. Rapture represents a completely fresh way of taking the digital signal and converting it to analogue.

Key Features:

- Dual-Mono Topology: each channel is derived by the summation of two switched current sources to improve linearity with the current to voltage transform and filtering by the discrete current-conveyor.
- LVDS (low-voltage differential signalling) transfer of sensitive timing and digital audio information: time-aligned signals can corrupt the operation of adjacent analogue circuits and are themselves easily and irretrievably upset. Roksan has engineered a network of matched transmission lines for perfect digital signal integrity with no associated noise footprint. Delivering the most accurate stereo imaging, breath-taking resolution and an inky-black quietness between musical passages.

Analogue Pre-Amplifier & Phono Stage

Delivering total performance through the cleanest possible signal transfer

Caspian Series 4G utilises a new analogue pre-amplifier section, the aim of which is to ensure that the signal is kept as clean as possible. A carefully configured and fully balanced design, it delivers the highest levels of noise rejection possible. It boasts a novel ground switching input design, which keeps cross-talk between connected devices at an extremely low level. This feature is inherited and improved upon from Roksan's Attessa range.

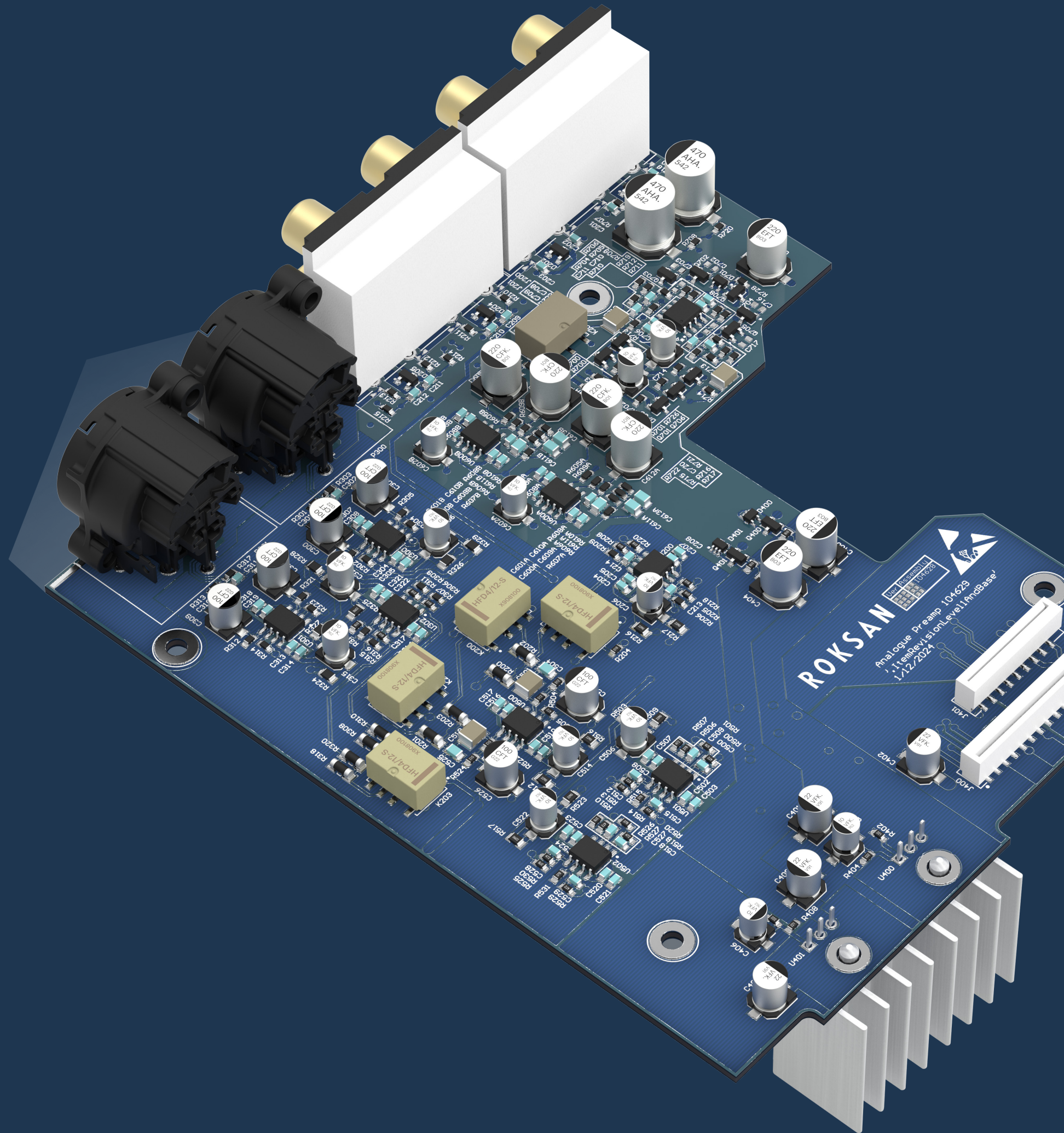
The use of multiple dedicated power supplies means Caspian Series 4G receives the cleanest delivery of current with the minimum of noise, which means it can deliver even greater audio performance.

Along with a range of balanced and un-balanced inputs, the Caspian Series 4G's pre-amplifier stage allows total flexibility between connected devices. Plus, thanks to its advanced integration, signal paths between adjoining system elements are seamless.

Phono Stage

The Caspian Series 4G's phono stage facilitates extremely accurate playback of vinyl. It features a dedicated input for MM cartridges, and the RIAA (Recording Industry Association of America) filter and equalization of each product is individually calibrated to cancel out component tolerances, thus ensuring the purest vinyl experience possible.

Both Caspian Series 4G models feature a pre-loaded profile for the Roksan Chorus 2 cartridge, to further enhance the enjoyment of the user's record collection.



Ultra-High Resolution Volume Control

The perfect balance between digital and analogue

There is much debate about digital domain attenuation versus a purely analogue scheme. However, the truth is that both have advantages; so, the Roksan approach was to think differently. As a result, the hybrid design developed for Caspian Series 4G encapsulates the best of both worlds.

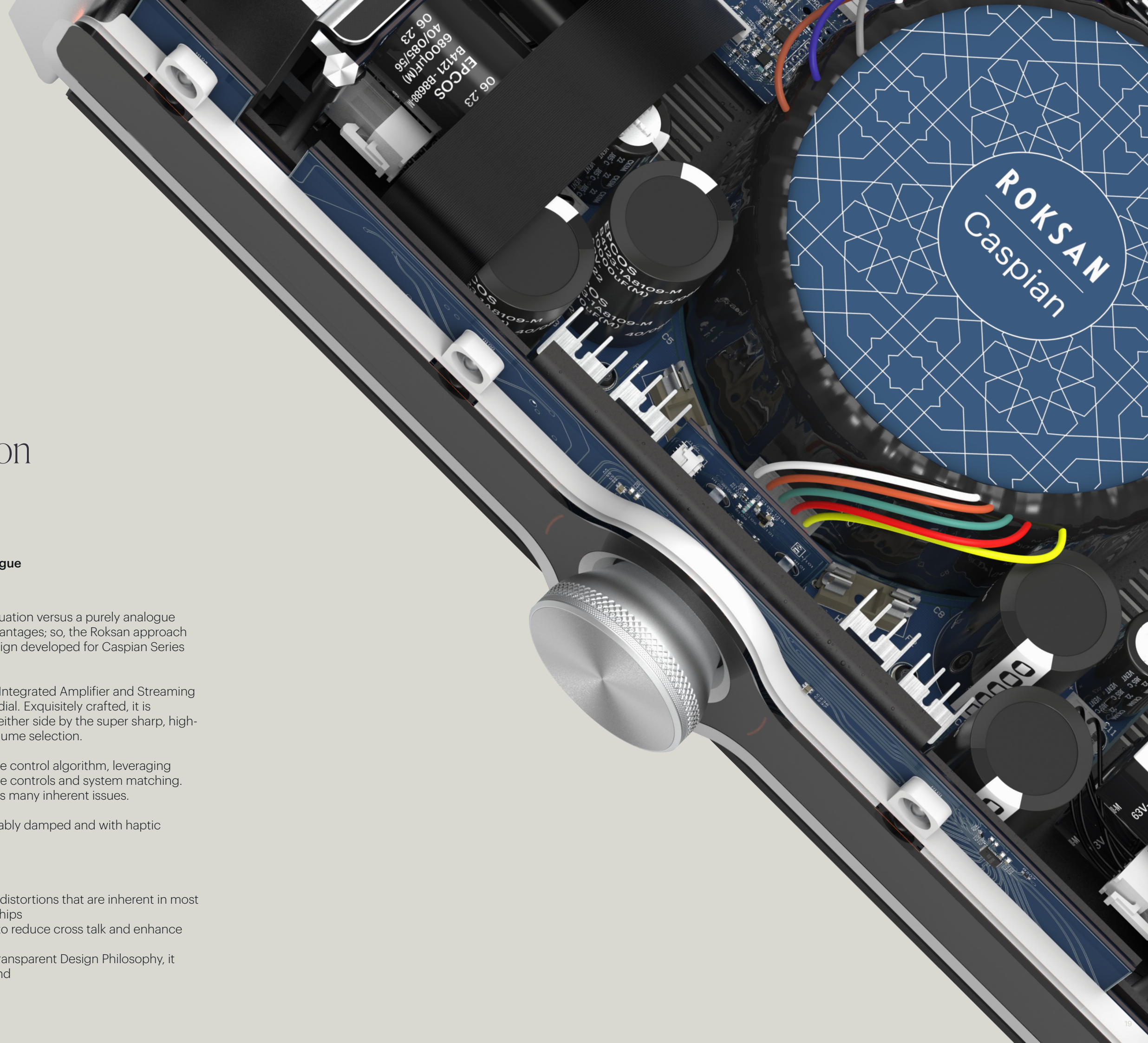
A user can interact with the Streaming Amplifier, Integrated Amplifier and Streaming Pre-Amplifier via the physical 'one-touch' control dial. Exquisitely crafted, it is positioned in the centre of the fascia, flanked on either side by the super sharp, high-resolution LED interface, denoting source and volume selection.

Behind the dial is a hybrid digital-analogue volume control algorithm, leveraging powerful digital signal processing to facilitate tone controls and system matching. This unique blend of digital and analogue resolves many inherent issues.

As a result, the central dial is a joy to use, impeccably damped and with haptic feedback, resulting in a flawless user-experience.

Key features:

- Implemented as discrete sections to remove distortions that are inherent in most commonly used monolithic volume control chips
- Mono design: each channel is kept separate to reduce cross talk and enhance imaging
- The embodiment of Monitor Audio Group's Transparent Design Philosophy, it imparts no character of its own onto the sound



Euphoria – Class AB Amplification

Power and finesse in equal measure with less distortion

Caspian Series 4G uses a new authoritative and intelligent class AB amplifier architecture, Euphoria.

There is much more to sound quality than just harmonic distortion and noise floor, although these are important. Roksan believes it's better to prioritise the intermodulation distortion of its designs – and to ensure that the harmonic and intermodulation distortion is flat across frequency and load. The resulting sound is purer, cleaner and more detailed.

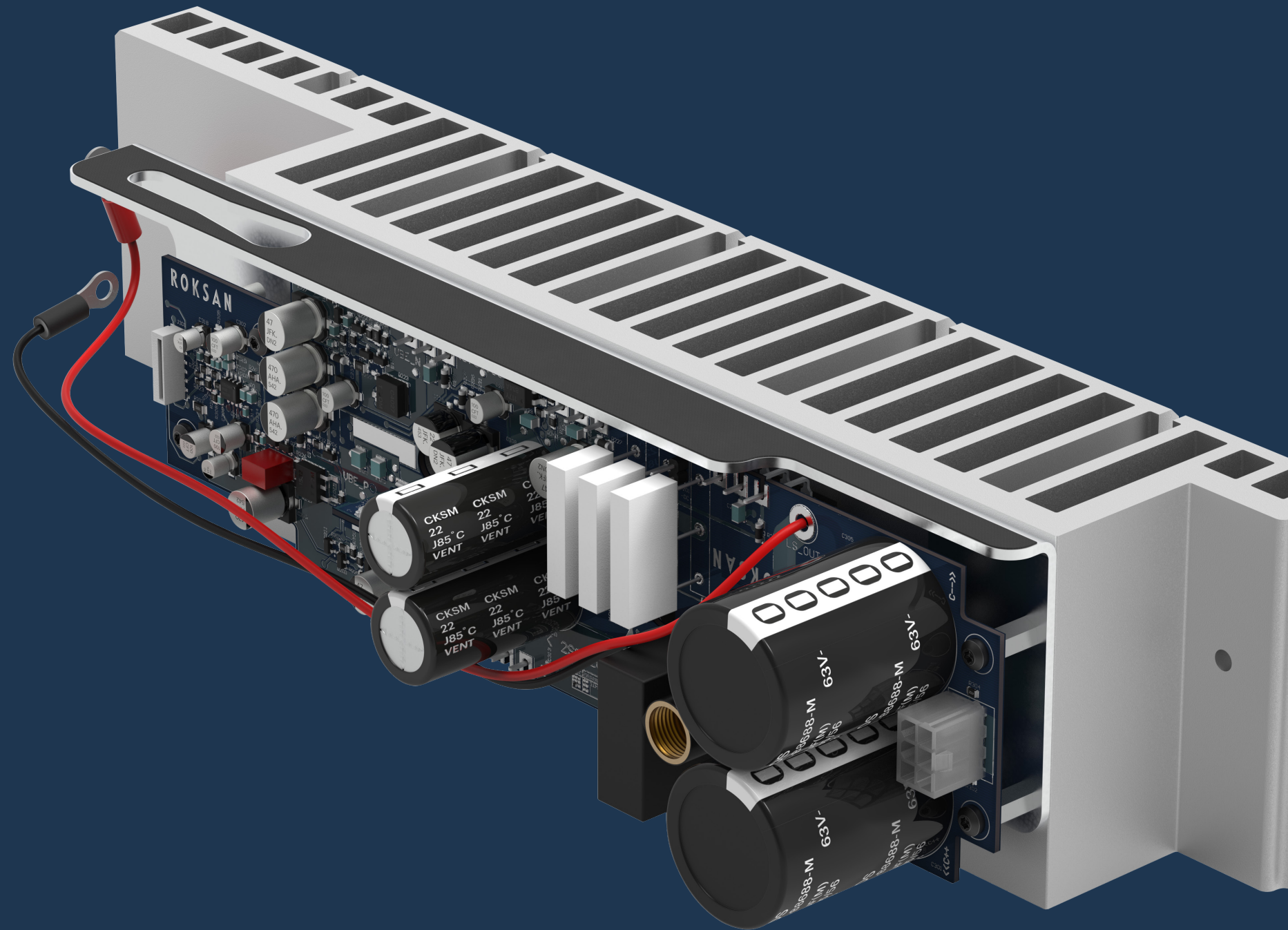
A power amplifier has two main sections that interact with each other – yet have quite different characteristics. One increases the voltage of the signal up to the required level to drive the speaker, and the other increases the current to drive the speaker's low impedance.

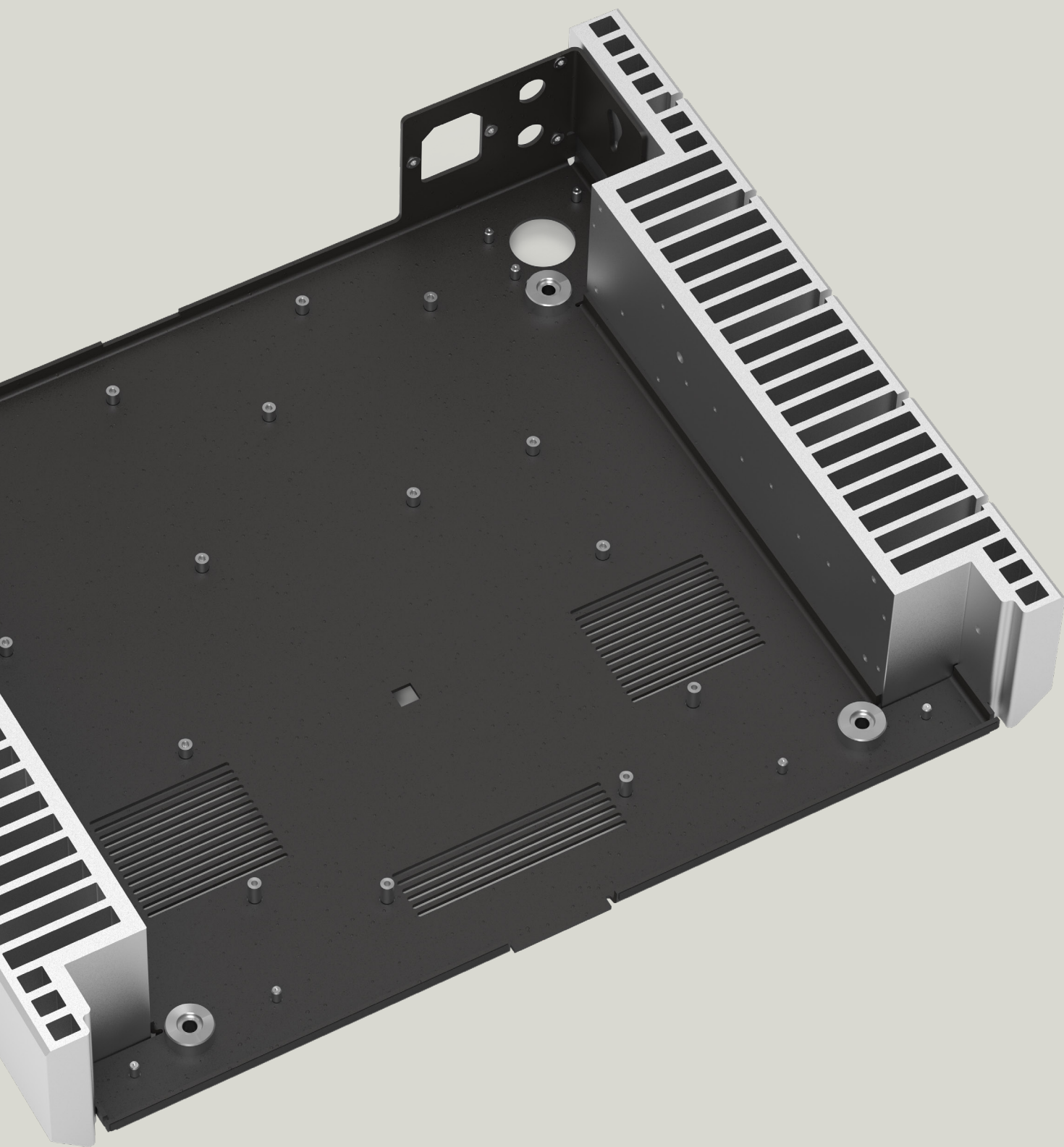
Both sections have been carefully scrutinised by Roksan's engineers, and each area has been performance engineered and improved. Within Caspian Series 4G, two separate and bespoke power supplies are used, and are independent of each other. Headroom on the voltage stage is increased, so that no matter how hard the amplifier is driven this section does not voltage clip.

Soft-clip behaviour

This new intelligent amplifier power supply architecture delivers an exceptional clip behaviour, which has been tuned through many listening sessions to extract the maximum Sound Pressure Level (SPL) from speakers before perceptual degrading of the audio. This means Caspian Series 4G sounds much louder with more usable power; clean, clear and dynamically exciting.

As a result, Caspian Series 4G provides exemplary levels of un-compromised power and scale. Total performance.





Chassis Design

The foundations of good design start at the bottom

The number of components, capacitors, circuit boards, transformers and amplifiers contained within a Caspian Series 4G product means that there isn't a lot of spare room within the sleek and elegant profiles. Yet crucially, everything has its place and is optimally positioned, ensuring signal transfer, cross talk, electrical interference and noise are all reduced, in order to deliver the perfect reproduction of recorded sound.

Hand-built, by Roksan's expert in-house technicians in Rayleigh, Essex, meticulously designed and engineered, Caspian Series 4G delivers total performance and an unapparelled listening experience.

Internal Antennas for Bluetooth Audio and Dual-band Wi-Fi

Custom designed for wide range and the full convenience of a wireless connection

The undeniable convenience of a wireless network connection notwithstanding, wired ethernet often sounds better due to reduced interaction with the sensitive electronics inside a component. However, in the modern wireless world, a wired connection is not always possible or desirable.

Moreover, stick antennas destroy the aesthetic of even the best-looking components, and can also couple interference straight into the adjacent audio interconnects.

Roksan once again thought differently. Caspian Series 4G employs a fully custom-designed, bespoke internal antenna design, with tuned reflectors that guard the sensitive circuits from interference and enhance the Wi-Fi signal to the router.



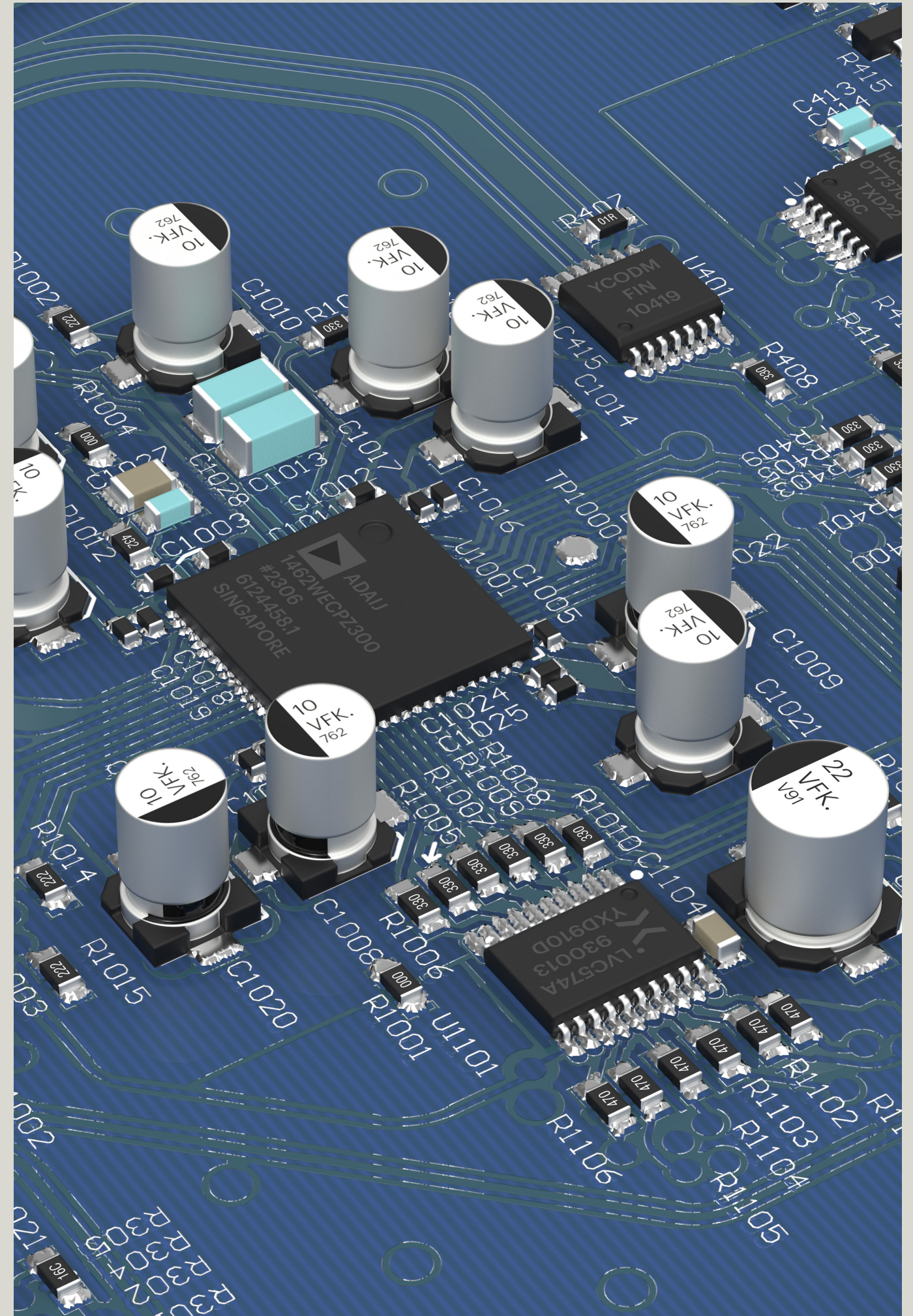
Powerful DSP Engine

Refine your listening experience with the powerful Roksan DSP Engine

Roksan's desire for total performance is aided further by the integration of Caspian Series 4G's powerful DSP Engine. This vital element delivers the intelligence and flexibility that helps the user tailor their listening experience to their environment and taste. It ensures Caspian 4G fully realises the accurate replay of the original recording, just as the artist intended – from the studio, into your home.

The power of the Roksan DSP Engine is accessed through the intuitive MaestroUnite app, where a user can optimise their listening experience using four key technologies:

- Intelligent Tone
- Intelligent Boundary
- Intelligent Speaker
- Intelligent Phono



MaestroUnite App



Intuitive Setup and Control of Caspian Series 4G

Caspian Series 4G makes use of Monitor Audio Group's in-house designed MaestroUnite app. It allows users to quickly set up their device, enabling connection to a local Wi-Fi network ready for Internet of Things (IoT) functionality.

Furthermore, the MaestroUnite app gives users control of features such as input configuration, headphone sensitivity, analogue input gain, balance and low power standby. It also utilises Roksan's innovative DSP Engine's enhanced features, which help users tailor their listening for a specific environment.

The MaestroUnite app provides users with an easy-to-use setup tool for Roksan electronics and Monitor Audio Anthra subwoofers, so that all they need to do is Listen Again.





ROKSAN
TUNER

ROKSAN

FM
AM
DAB



Caspian Streaming Amplifier

For today's connected consumer and music lover – glorious high-fidelity

The Caspian Streaming Amplifier unleashes the power of BluOS, premium multi-room high-resolution wireless streaming through the smart implementation of Euphoria, Caspian's powerful twin-independent amplification architecture, the revolutionary Rapture DAC technology, for improved digital to analogue signal conversion, and an advanced pre-amplifier and phono stage. All from a sleek aluminium design that exudes quality. Configured and controlled using the intuitive MaestroUnite app, the Caspian Streaming Amplifier delivers extraordinary levels of detailed, high-fidelity sound. Designed for the user.

Features at a glance:

- BluOS premium multi-room audio and high-resolution audio streaming.
- 105 Watts into 8Ohms / 200 Watts into 4Ohms of clean, precise power per channel.
- Euphoria: powerful dual-mono AB amplifier architecture for total power and control.
- Revolutionary Rapture DAC Technology for improved digital-to-analogue conversion.
- Advanced pre-amplifier ensures the signal transfer is kept as clean as possible
- High-performance phono stage, individually calibrated to a tolerance previously thought impossible.
- Machined and extruded 6mm thick aluminium casework with integrated heatsinks
- Finishes available: Silver and Black



Caspian Streaming Amplifier



Standby

Previous, Play Pause, Next (Streaming variant only)

OLED Display

Volume Input, Selection Dial (with haptic feedback)

Volume Display

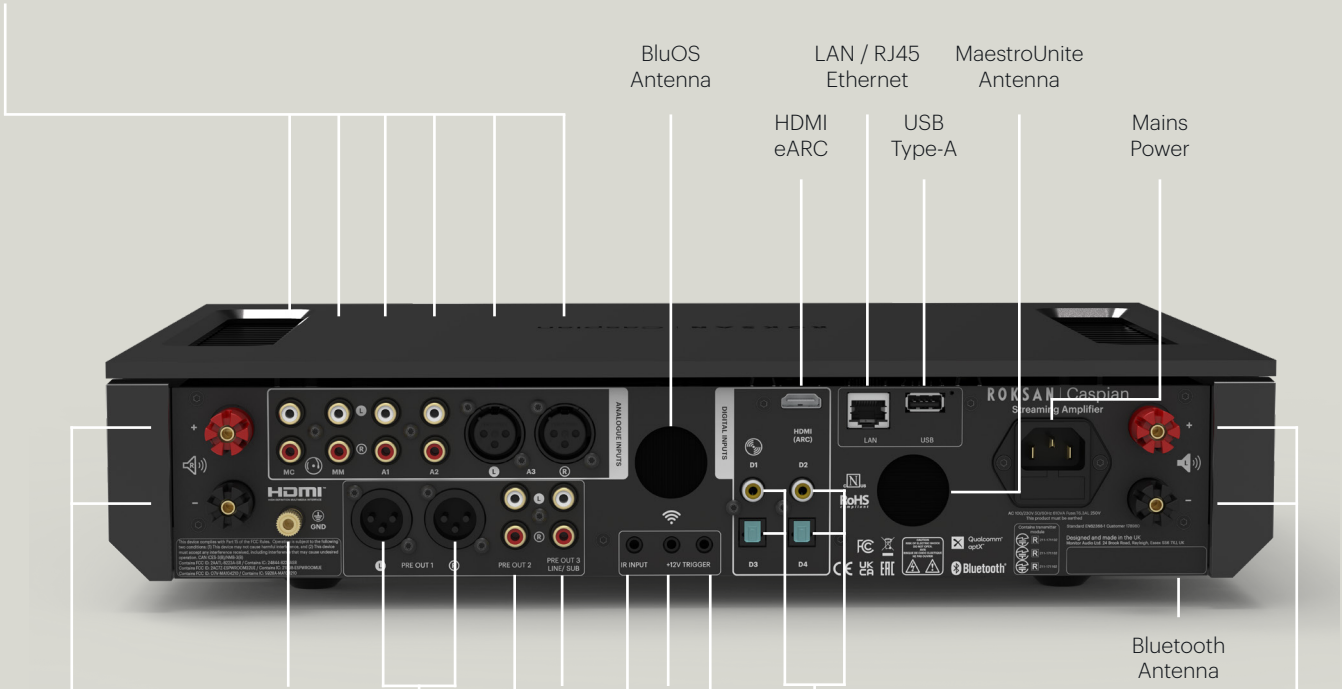
Analogue Inputs

Analogue 1 (A1) – Variable Input (No signal sense)

Analogue 2 (A2) – Fixed Input with signal sense

Analogue MM and MC (Phono) – RIAA equalised (earth chassis binding post provided)

Analogue 3 – XLR Balanced Inputs



Outputs

Right Loudspeaker binding terminal posts

Turntable Ground

Pre-Out 1 XLR

Pre-Out 2 RCA

Pre-Out 3/Line/Sub

12V Trigger Input

IR Input

12V Trigger Input & Passthrough

Digital Inputs

Digital 1 (D1) – Coax SPDIF (up to 192kHz/24bit)

Digital 2 (D2) – Coax SPDIF (up to 192kHz/24bit)

Digital 3 (D3) – Optical SPDIF (up to 96kHz/24bit)

Digital 4 (D4) – Optical SPDIF (up to 96kHz/24bit)

Outputs

Left Loudspeaker binding terminal posts



Caspian Integrated Amplifier

Intuitive design meets musical precision for total performance.

The Caspian Integrated Amplifier delivers total performance through its innovative Euphoria amplification architecture and advanced analogue connections, offering a flawless presentation of music via any source. The evolutionary Rapture DAC technology, for improved digital to analogue signal conversion, allows for a near perfect signal transfer, and ensures that the Euphoria dual amplification architecture delivers total performance from whatever source a user connects.

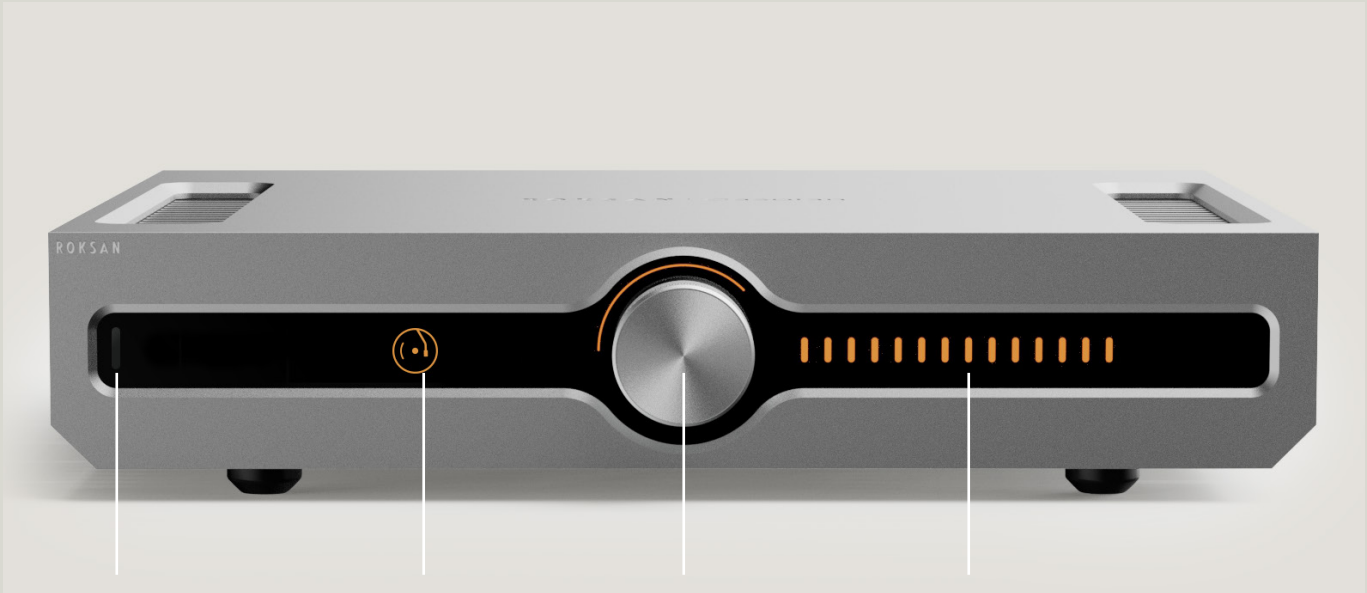
Setup via the intuitive MaestroUnite app, the Caspian Integrated Amplifier delivers extraordinary levels of detailed, high-fidelity sound. Designed for the user.

Features at a glance:

- 105 Watts into 8Ohms / 200 Watts into 4Ohms of clean, precise power per channel.
- Euphoria: powerful dual-mono AB amplifier architecture for total power and contro.
- Revolutionary Rapture DAC Technology for improved digital-to-analogue conversion.
- Advanced pre-amplifier ensures the signal transfer is kept as clean as possible
- High-performance phono stage, individually calibrated to a tolerance previously thought impossible.
- Machined and extruded 6mm thick aluminium casework with integrated heatsinks.
- Finishes available: Silver and Black.



Caspian Integrated Amplifier



Standby

OLED Display

Volume Input, Selection Dial (with haptic feedback)

Volume Display

Analogue Inputs

- Analogue 1 (A1) – Variable Input (No signal sense)
- Analogue 2 (A2) – Fixed Input with signal sense
- Analogue MM and MC (Phono) – RIAA equalised (earth chassis binding post provided)
- Analogue 3 – XLR Balanced Inputs



Outputs

Right Loudspeaker binding terminal posts

Turntable Ground

Pre-Out 1 XLR

Pre-Out 3/Line/Sub

Pre-Out 2 RCA

12V Trigger Input

IR Input

12V Trigger Input & Passthrough

Digital Inputs

- Digital 1 (D1) – Coax SPDIF (up to 192kHz/24bit)
- Digital 2 (D2) – Coax SPDIF (up to 192kHz/24bit)
- Digital 3 (D3) – Optical SPDIF (up to 96kHz/24bit)
- Digital 4 (D4) – Optical SPDIF (up to 96kHz/24bit)

Outputs

Left Loudspeaker binding terminal posts

MaestroUnite Antenna

Mains Power

Bluetooth Antenna



Caspian Streaming Pre-Amplifier



For today's connected consumer and music lover – in glorious high-fidelity

The Caspian Streaming Pre-Amplifier is the control hub of any Caspian system.

With BluOS built-in, it delivers premium streaming up to 24-bit/192kHz across as many as 64 zones of high-resolution audio. BluOS also provides effortless browsing and instant access to locally stored music as well as leading streaming and radio services. Also featuring both MM and MC phono stages, every input is engineered for precision, ensuring faithful reproduction and seamless integration of digital and analogue sources alike.

When paired with the Caspian Power Amplifier, the result is exceptional resolution, scale, and musicality — allowing the full character of every performance to shine through.

Setup and system management are made simple via the MaestroUnite app, providing both convenience and complete flexibility. Designed for the user.

Features at a glance:

- BluOS multi-room and high-resolution music streaming
- HDMI eARC
- RCA Stereo, Balanced XLR and subwoofer outputs
- aptX™, AAC Wireless Bluetooth, and MQA audio codecs
- Certified Roon Tested, providing instant access to high-quality audio streaming
- MM & MC phono stage with cartridge profile support
- Revolutionary Rapture DAC Technology for improved digital-to-analogue conversion
- Included remote control for intuitive use and control
- Clear front-panel display, single-touch UI with intelligent haptic feedback
- Ethernet connectivity for software updates and integration with control systems
- Machined and extruded 6mm thick aluminium casework with integrated heatsinks
- Finishes available: Silver and Black
- MaestroUnite app for over-the-air updates, set up and control

Caspian Streaming Pre-Amplifier



Standby

Previous, Play Pause, Next (Streaming variant only)

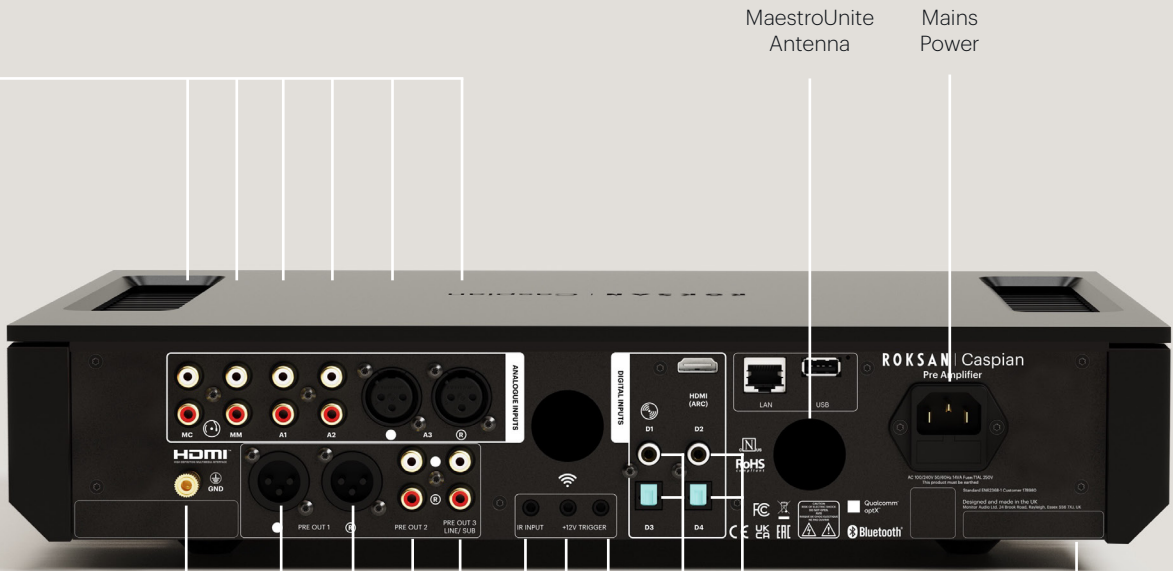
OLED Display

Volume Input, Selection Dial (with haptic feedback)

Volume Display

Analogue Inputs

Analogue 1 (A1) – Variable Input (No signal sense)
Analogue 2 (A2) – Fixed Input with signal sense
Analogue MM and MC (Phono) – RIAA equalised (earth chassis binding post provided)
Analogue 3 – XLR Balanced Inputs



Turntable Ground

Pre-Out 1 XLR

Pre-Out 2 RCA

Pre-Out 3/Line/Sub

IR Input

12V Trigger Input & Passthrough

12V Trigger Input

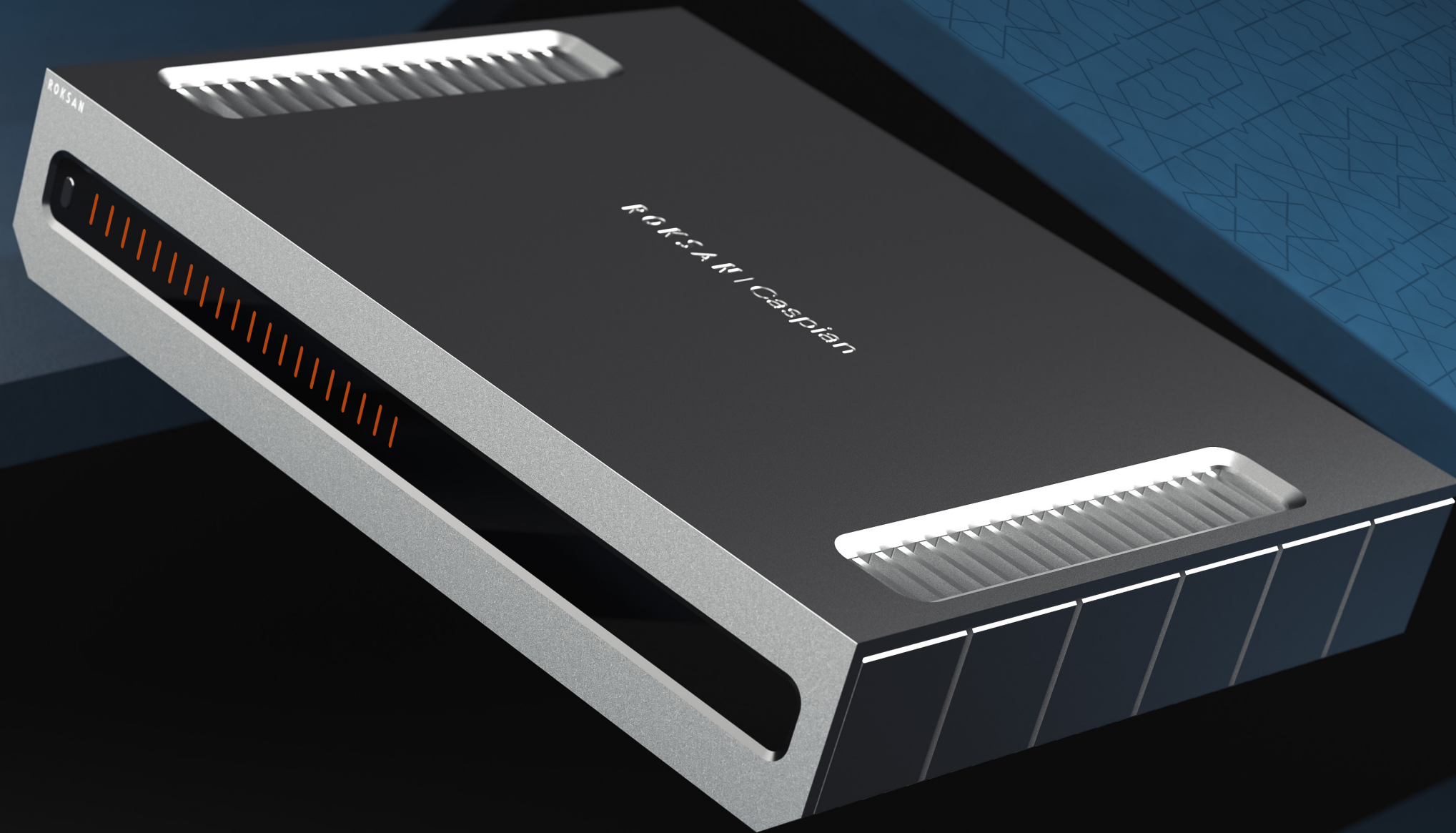
Digital Inputs

- 2x Coax (D1, D2)
- 2x Optical (D3, D4)
- Bluetooth Audio
- BluOS
- HDMI eARC

MaestroUnite Antenna

Mains Power

Bluetooth Antenna



Caspian Power Amplifier

Power in its purest form, however you choose to experience it.

The Caspian Power Amplifier is engineered to deliver uncompromising drive and power, whether used in stereo or mono-block configuration.

It harnesses Roksan's advanced Euphoria amplification architecture and precision-engineered analogue circuitry to ensure a transparent signal path that preserves every detail and dynamic nuance of the music. When paired with the Caspian Streaming Pre-Amplifier, it forms a performance-focused duo. With fully balanced signal paths, together they unlock extraordinary clarity, authority and scale across all genres. Just add speakers...

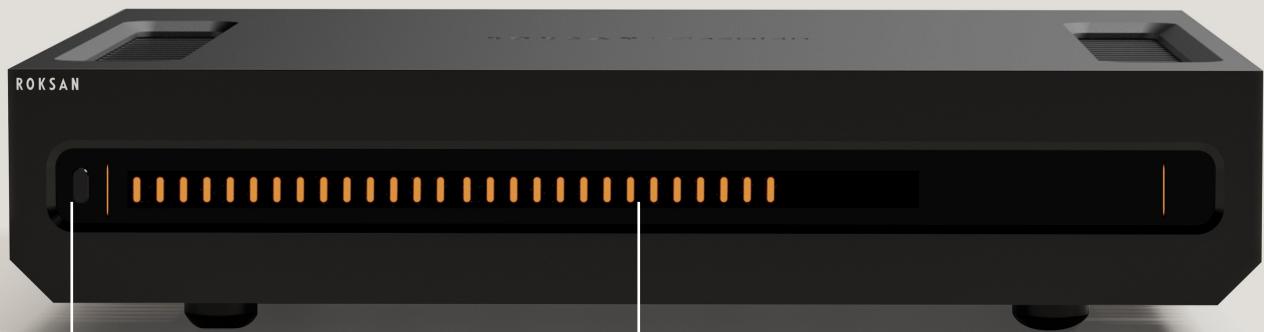
Setup and system integration are seamless via the MaestroUnite app, giving users both simplicity and flexibility in creating their ideal listening experience.

Features at a glance:

- 105 Watts into 8 Ohms / 200 Watts into 4 Ohms of clean, precise power per channel
- 420W into 8 Ohms / 630W into 4 Ohms Mono-bridged for higher power
- Euphoria: powerful dual-mono AB amplifier architecture for total power and control
- RCA Stereo and Balanced XLR Analogue Inputs
- Machined and extruded 6mm thick aluminium casework with integrated heatsinks
- Finishes available: Silver and Black

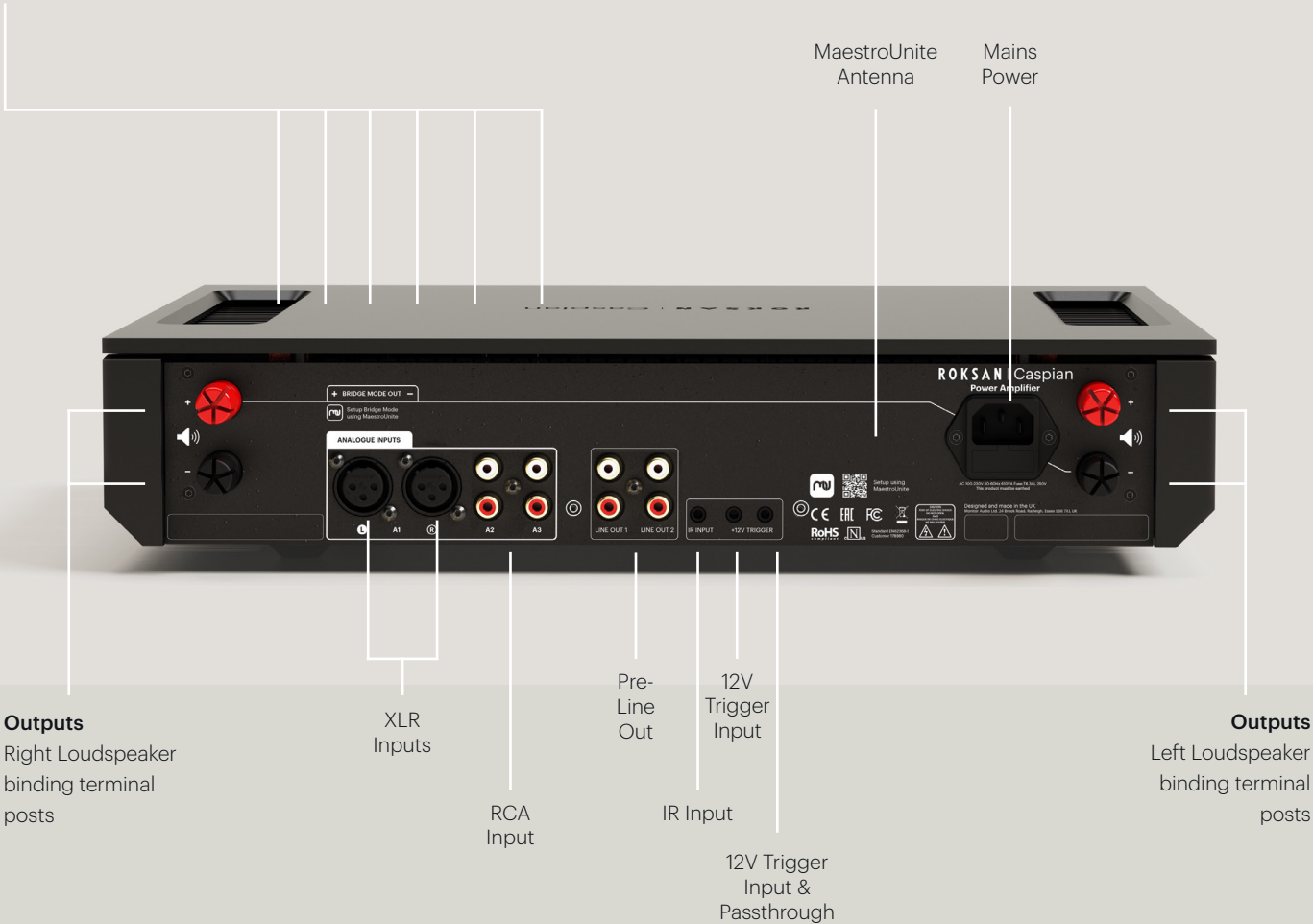


Caspian Power Amplifier



Standby

OLED Display



Outputs
Right Loudspeaker
binding terminal
posts

XLR
Inputs

RCA
Input

Pre-Line
Out

IR Input

12V Trigger
Input &
Passthrough

Outputs
Left Loudspeaker
binding terminal
posts

MaestroUnite
Antenna

Mains
Power

Roksan Remote

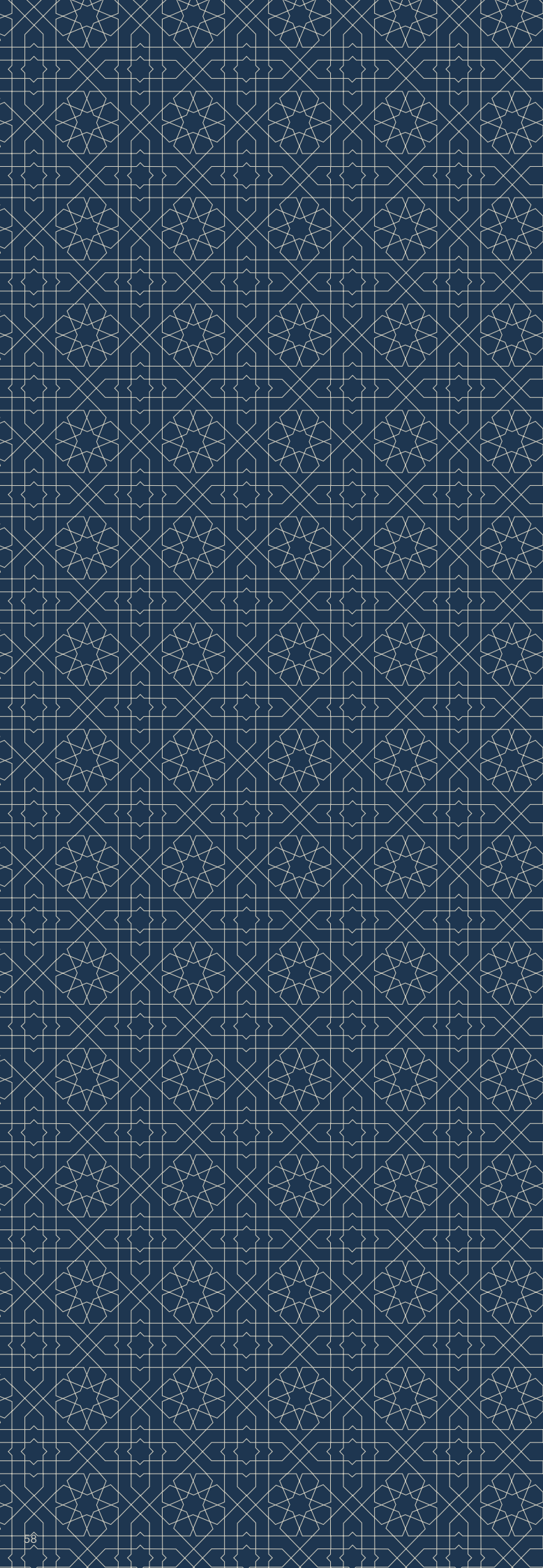
Total performance at your fingertips.

Caspian Series 4G comes with an elegant and practical Roksan remote control to help users operate their device with ease.

Beautifully designed, its ergonomic, aluminium extruded design is perfectly weighted to sit comfortably in the hand. The buttons are clear and intuitive to use, helping the user navigate through the inputs and directly set pre-sets, as well as a host of standard operational features.







Roksan has created four unique products for today's connected consumer. Delivering on flexibility, versatility and total performance. Designed for the User.

Caspian Series 4G deploys an all-new, advanced electronics architecture within two carefully considered, artfully configured designs

Caspian Series 4G is driven by an intuitive user experience, including a high-fidelity multi-room streaming platform, advanced innovative electronics architecture and muscular, powerful amplification – each element delivering on Caspian Series 4G's total performance objective

Designed and engineered under Monitor Audio Group's Transparent Design Philosophy, and hand-built in Rayleigh, Essex.



Technical specifications



Model	Caspian Integrated Amplifier	Caspian Streaming Amplifier	Caspian Power Amplifier	Caspian Streaming Pre-Amplifier
Connectivity Summary				
Analogue Inputs	2x RCA Stereo (A1, A2), 1x Balanced XLR (A3)	2x RCA Stereo (A1, A2), 1x Balanced XLR (A3)	2x RCA Stereo (A1, A2), 1x Balanced XLR (A3)	2x RCA Stereo (A2, A3) 1x Balanced XLR (A1), 1x MM Phono (MM), 1x MC Phono (MC)*
Digital Inputs	2x Coax (D1, D2) 2x Optical (D3, D4) Bluetooth Audio	2x Coax (D1, D2) 2x Optical (D3, D4) Bluetooth Audio BluOS HDMI eARC	-	2x Coax (D1, D2) 2x Optical (D3, D4) Bluetooth Audio BluOS HDMI eARC*
Analogue Outputs	1x Balanced XLR (Pre1), 1x RCA Stereo (Pre2), 1x RCA Stereo (Pre3)	1x Balanced XLR (Pre1), 1x RCA Stereo (Pre2), 1x RCA Stereo (Pre3)	2x RCA Stereo (Line 1,2)	1x Balanced XLR (Pre1), 1x RCA Stereo (Pre2), 1x RCA Stereo (Pre3)*
Amplifier Output	1x Pair of Speaker binding posts (L&R)	1x Pair of Speaker binding posts (L&R)	1x Pair of Speaker binding posts (L&R)	-
Other Inputs / Outputs	Wi-Fi 4, BLE, 12V Trigger, Wired IR	Gigabit Ethernet RJ45, W-Fi 5, Wi-Fi 4, BLE, 12V Trigger, Wired IR	Wi-Fi 4, BLE, 12V Trigger, Wired IR	Gigabit Ethernet RJ45, W-Fi 5, Wi-Fi 4, BLE, 12V Trigger, Wired IR
Power	IEC C14, Fused 6.2AT	IEC C14, Fused 6.2AT	IEC C14, Fused 6.3AT - 250V	IEC C14, Fused 6.3AT - 250V
User Interface				
Primary Interface (on unit)	Dynamic Control Dial (with haptic feedback) to control volume, inputs & power	Dynamic Control Dial (with haptic feedback) to control volume, inputs & power	Power Button - on/standby	Dynamic Control Dial (with haptic feedback) to control volume, inputs & power
Secondary Interface (on unit)	--	Backward, Play/Pause, Forward	-	Backward, Play/Pause, Forward
Remote Control	Black, 15 button IR remote. Bead blasted & anodised aluminium extruded case with laser etched logo.	Black, 15 button IR remote. Bead blasted & anodised aluminium extruded case with laser etched logo.	Maestro Unite App	Black, 15 button IR remote. Bead blasted & anodised aluminium extruded case with laser etched logo.
Power Amplifier Section				
Power Amplifier Technology	Dual Mono Euphoria Amplifier Stereo Configuration	Dual Mono Euphoria Amplifier Stereo Configuration	Dual Mono Euphoria Amplifier Mono-Bridge Capable	-
Amplifier Class	AB	AB	AB	-
Output Power, 8 Ohms (235VAC @ 1% THD, both channels driven)	105W	105W	105W	-
Output Power, 4 Ohms (235VAC @ 1% THD, both channels driven)	200W	200W	200W	-
THD+N (1W @ 1kHz Both Channels driven)	<0.007%	<0.007%	<0.007%	-
Gain	29dB	29dB	29dB	-
Signal to Noise (1W/8R 2Vrms A1, both channels driven) - Stereo	>85dB	>85dB	>85dB	-
Output Power, 8 Ohms (235VAC @ 1% THD) - Mono-Bridged	-	-	420W	-
Output Power, 4 Ohms (235VAC @ 1% THD) - Mono-Bridged	-	-	630W	-
Frequency Linearity (20Hz - 20kHz)	+/-0.25dB	+/-0.25dB	+/-0.25dB	-
Power Supply	600VA / 36,400uF per Rail	600VA / 36,400uF per Rail	600VA / 36,400uF per Rail	-
Phono Section				
Inputs	MM	MM	-	MM& MC
Gain MM	53dB	53dB	-	53dB
Gain Adjustment MM	Low (-6dB), Mid (0dB default), High (+6dB)	Low (-6dB), Mid (0dB default), High (+6dB)	-	Low (-6dB), Mid (0dB default), High (+6dB)
Input Impedance MM	47k ohms/100pF	47k ohms/100pF	-	47k ohms/100pF
Rapture DAC				
DAC Technology	Rapture DAC, Dual Mono Balanced	Rapture DAC, Dual Mono Balanced	-	Rapture DAC, Dual Mono Balanced
Format Support	PCM	PCM	-	PCM
Sampling Rate	up to 24bit / 192kHz	up to 24bit / 192kHz	-	up to 24bit / 192kHz
Pre-Amplifier Section (Amp, Pre1, Pre2)				
Volume Control Technology	Hybrid Digital Analogue	Hybrid Digital Analogue	-	Hybrid Digital Analogue

Model	Caspian Integrated Amplifier	Caspian Streaming Amplifier	Caspian Power Amplifier	Caspian Streaming Pre-Amplifier
Volume Control Matching	<0.25dB	<0.25dB	-	<0.25dB
THD+N (3.9Vrms, A-Weighted)	<0.0008%	<0.0008%	-	<0.0008%
Signal to Noise Ratio (3.9Vrms, A-Weighted)	>108dB	>108dB	-	>108dB
Maximum Output Level	3.9Vrms	3.9Vrms	-	3.9Vrms
Supported Features	Pre-Output, Line Level Output (Fixed Level), Sub-Woofer Output (Low-Pass Filtered), Intelligent DSP	Pre-Output, Line Level Output (Fixed Level), Sub-Woofer Output (Low-Pass Filtered), Intelligent DSP	-	Pre-Output, Line Level Output (Fixed Level), Sub-Woofer Output (Low-Pass Filtered), Intelligent DSP

Pre-Amplifier Section (Pre3)				
Volume Control Technology	Digital	Digital	-	Digital
Volume Control Matching	<0.25dB	<0.25dB	-	<0.25dB
THD+N (3.9Vrms, A-Weighted)	<0.003%	<0.003%	-	<0.003%
Signal to Noise Ratio (3.9Vrms, A-Weighted)	>108dB	>108dB	-	>108dB
Maximum Output Level	3.9Vrms	3.9Vrms	-	3.9Vrms
Supported Features	Pre-Output, Line Level Output (Fixed Level), Sub-Woofer Output (Low-Pass Filtered), Intelligent DSP	Pre-Output, Line Level Output (Fixed Level), Sub-Woofer Output (Low-Pass Filtered), Intelligent DSP	2 x RCA Line-Level Out	Pre-Output, Line Level Output (Fixed Level), Sub-Woofer Output (Low-Pass Filtered), Intelligent DSP

Bluetooth				
Protocol	A2DP Audio Profile	A2DP Audio Profile	-	A2DP Audio Profile
Codecs	SBC, aptX & AAC	SBC, aptX & AAC	-	SBC, aptX & AAC
Range	>15m	>15m	-	>15m

Digital Inputs				
Coax Inputs (D1, D2)	up to 24bit / 192kHz (Stereo)	up to 24bit / 192kHz (Stereo)	-	up to 24bit / 192kHz (Stereo)
Optical Inputs (D3, D4)	up to 24bit / 192kHz (Stereo)	up to 24bit / 192kHz (Stereo)	-	up to 24bit / 192kHz (Stereo)
HDMI ARC & eARC	No	Yes (2.0)	-	Yes (2.0)

Analogue Inputs				
Maximum Input Level	6.7Vrms	6.7Vrms	11Vrms RCA, 2.2Vrms XLR - Stereo 2.2Vrms RCA, 4.2Vrms XLR - Mono	6.7Vrms
Music Sense	A2 Input	A2 Input	A2 Input	A2 Input
AV Mode	A2 Input	A2 Input	-	A2 Input

BluOS Section				
BluOS Streaming Supported	No	Yes	No	Yes
Audio Formats	-	MP3, AAC, WMA, OGG, WMA-L ALAC, OPUS	-	MP3, AAC, WMA, OGG, WMA-L ALAC, OPUS
Hi-Resolution Audio Formats	-	MQA, FLAC, WAV AIFF, Supports converted DSD playback via the desktop app only.	-	MQA, FLAC, WAV AIFF, Supports converted DSD playback via the desktop app only.
Sampling Rate	-	up to 192kHz	-	up to 192kHz
Bit Depth	-	16 - 24	-	16 - 24
Network Connectivity	-	Gigabit Ethernet RJ45, W-Fi 5	-	Gigabit Ethernet RJ45, W-Fi 5
Supported Network File Storage Protocol	-	Server Message Block (SMB)	-	Server Message Block (SMB)
USB	-	1x Type-A port for connection to USB memory stick (FAT32 or NTFS formatted) and supported peripherals	-	1x Type-A port for connection to USB memory stick (FAT32 or NTFS formatted) and supported peripherals
Supported Operating System	-	Music playback from network shares on the following desktop operating systems: Microsoft Windows XP, 2000, Vista, 7, 8 to current Windows Operating Systems and macOS versions**	-	Music playback from network shares on the following desktop operating systems: Microsoft Windows XP, 2000, Vista, 7, 8 to current Windows Operating Systems and macOS versions**
Mobile Application	-	Free BluOS Controller App available for download from the respective App stores of Apple iOS devices (iPad, iPhone and iPod), Android devices, Kindle Fire and Windows or macOS desktops	-	Free BluOS Controller App available for download from the respective App stores of Apple iOS devices (iPad, iPhone and iPod), Android devices, Kindle Fire and Windows or macOS desktops
Supported music services and partners	-	Over 20 natively integrated streaming services. For more information go to https://bluos.io/	-	Over 20 natively integrated streaming services. For more information go to https://bluos.io/
Third Party Certified Services	-	Apple Airplay, Spotify Connect, Tidal Connect	-	Apple Airplay, Spotify Connect, Tidal Connect
ROON Ready	-	ROON Ready, ROON Tested	-	ROON Ready, ROON Tested
Control Integrations	-	Creston, Control4 (OS3), Control4 (OS2), RTI, URC, BluOS URC Driver, URC, Lutron, NICE, GIRA, BluOS Integration Utility, BluOS Cusomt Integration API	-	Creston, Control4 (OS3), Control4 (OS2), RTI, URC, BluOS URC Driver, URC, Lutron, NICE, GIRA, BluOS Integration Utility, BluOS Cusomt Integration API

Model	Caspian Integrated Amplifier	Caspian Streaming Amplifier	Caspian Power Amplifier	Caspian Streaming Pre-Amplifier
Maestrounite				
Maestrounite Supported	Yes	Yes	Yes	Yes
Network Connectivity	Bluetooth LE Wi-Fi 4 (Only connects for Over-the-Air Updates)	Bluetooth LE Wi-Fi 4 (Only connects for Over-the-Air Updates)	Bluetooth LE Wi-Fi 4 (Only connects for Over-the-Air Updates)	Bluetooth LE Wi-Fi 4 (Only connects for Over-the-Air Updates)
Mobile Application	iOS, Android	iOS, Android	iOS, Android	iOS, Android
Over-the-Air Updates	Firmware Updates are available via the Maestrounite configured Wi-Fi connection. This can be setup to connect & update on user request or during periods of inactivity.	Firmware Updates are available via the Maestrounite configured Wi-Fi connection. This can be setup to connect & update on user request or during periods of inactivity.	Firmware Updates are available via the Maestrounite configured Wi-Fi connection. This can be setup to connect & update on user request or during periods of inactivity.	Firmware Updates are available via the Maestrounite configured Wi-Fi connection. This can be setup to connect & update on user request or during periods of inactivity.
Other				
Wired IR Input	5 - 14V, Mono 3.5mm jack plug, any polarity	5 - 14V, Mono 3.5mm jack plug, any polarity	5 - 14V, Mono 3.5mm jack plug, any polarity	5 - 14V, Mono 3.5mm jack plug, any polarity
12V Trigger Input	5 - 14V, 3.5mm jack dual polarity (On / Standby)	5 - 14V, 3.5mm jack dual polarity (On / Standby)	5 - 14V, 3.5mm jack dual polarity (On / Standby)	5 - 14V, 3.5mm jack dual polarity (On / Standby)
12V Trigger Pass-through	3.5mm jack Pass through from input only	3.5mm jack Pass through from input only	3.5mm jack Pass through from input only	3.5mm jack Pass through from input only
Nominal Mains Voltage	Auto-Selecting Power Supply, 100-120VAC & 220-240 VAC	Auto-Selecting Power Supply, 100-120VAC & 220-240 VAC	Auto-Selecting Power Supply, 100-120VAC & 220-240 VAC	Auto-Selecting Power Supply, 100-120VAC & 220-240 VAC
Power Consumption	610VA, Standby 0.5W, Network Standby 2W (Standby Plus, allows fast boot)	610VA, Standby 0.5W, Network Standby 2W (Standby Plus, allows fast boot)	610VA, Standby 0.5W, Network Standby 2W (Standby Plus, allows fast boot)	85VA, Standby 0.5W, Network Standby 2W (Standby Plus, allows fast boot)
Mechanical				
Avalible Finishes	Silver, Black	Silver, Black	Silver, Black	Silver, Black
Construction	Extruded and machined Aluminium front & top cover with extruded Aluminium heatsinks.	Extruded and machined Aluminium front & top cover with extruded Aluminium heatsinks.	Extruded and machined Aluminium front & top cover with extruded Aluminium heatsinks.	Extruded and machined Aluminium front & top cover with extruded Aluminium heatsinks.
External Dimensions with all accessories fitted (H x W x D)	93 x 432 x 378mm (3 11/16 x 17 x 14 7/8") See downloads for CAD drawings	93 x 432 x 378mm (3 11/16 x 17 x 14 7/8") See downloads for CAD drawings	93 x 432 x 378mm (3 11/16 x 17 x 14 7/8") See downloads for CAD drawings	93 x 432 x 378mm (3 11/16 x 17 x 14 7/8") See downloads for CAD drawings
Weight (Product, Each)	15.2 kg (33 lb 8 oz)	15.5 kg (34 lb 3 oz)	14.9 kg (32 lb 14 oz)	10.1 kg (22 lb 4 oz)
Sold As	Single	Single	Single	Single

Listen Again.

Roksan
24 Brook Road
Rayleigh, Essex
SS6 7XJ
England
Tel: +44 (0)1268 740580
Email: info@monitoraudio.group

roksan.com

©Monitor Audio Ltd. | V1-2024 - Caspian - Product Brochure

