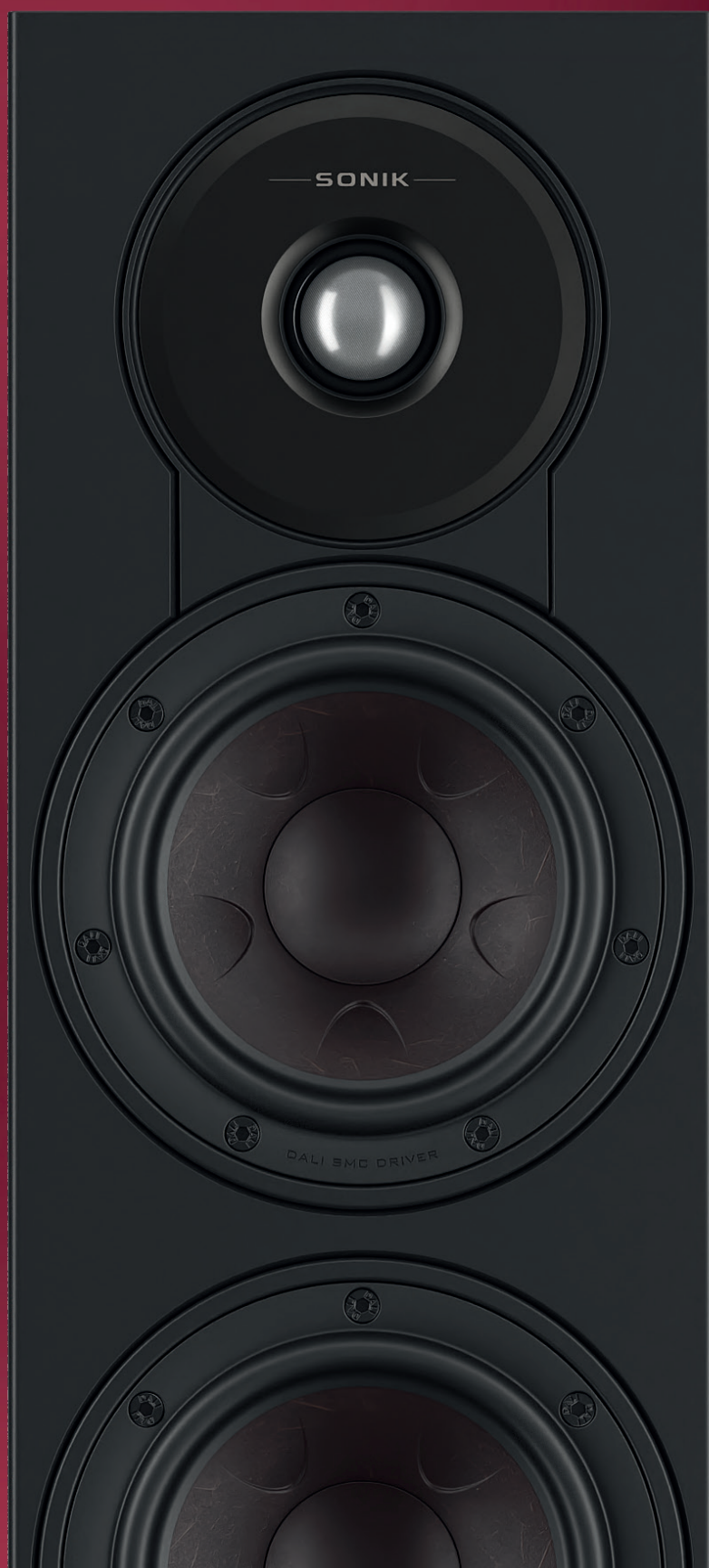


DALI SONIK

TECHNOLOGY PAPER



DALI

EXPERIENCE THE SONIK EVOLUTION

The DALI SONIK series represents a refinement and evolution of what's possible in audio quality and design within its price class. DALI SONIK loudspeakers set the benchmark for both audio performance and visual design at an affordable price.



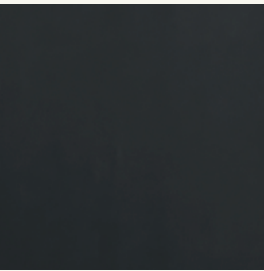
EXCEPTIONAL SOUND AND DESIGN

Immersive music and movie experiences in any space.

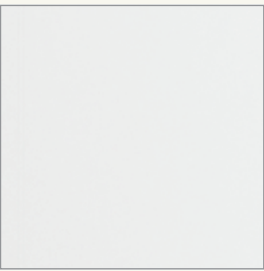
The DALI SONIK series combines cutting-edge technologies - patented SMC™ magnet systems, Clarity Cone™ paper and wood fibre drivers, and hybrid tweeters - for unparalleled audio clarity and low distortion. Designed for versatile applications, from compact shelf and wall mounting to large floorstanders, they deliver immersive sound for music, movies, and home theatre. Each model offers

exceptional performance - rich bass, articulate midrange, detailed highs - at an unprecedented value, making high-end sound accessible for any space or budget. The sleek designs and innovative features ensure seamless integration into diverse setups, redefining the balance of performance versus price and delivering true high-fidelity sound for every home.

ENCLOSURE FINISHES



Black Ash



White



Walnut



Natural Oak

ADVANCED DALI TECH FOR DEEPER DETAIL AND CLARITY

DALI SONIK speakers use technology from our flagship models, including patented SMC™ magnet systems and Clarity Cone™ drivers - to deliver ultra-low distortion and stunning sound clarity. You'll hear layers in your favourite tracks and lifelike details in film soundtracks you've never noticed before. This is high-fidelity made accessible.



A MODEL FOR EVERY SPACE, EVERY SETUP

No matter your room size or setup, there's a SONIK speaker that fits. Choose from versatile models designed to blend into your space and deliver optimized performance - whether you're building a compact stereo system or a full surround sound experience. Flexibility without compromise, for any home.



IMMERSIVE SOUND FOR MUSIC AND MOVIES

SONIK speakers are tuned to bring every listening experience to life - whether you're watching a tense film scene or streaming your favorite album. Expect rich bass, articulate midrange, and crisp highs that deliver full emotional impact. With SONIK, your home becomes a space where sound truly comes alive.



MODERN DESIGN MEETS EXPERT CRAFTSMANSHIP

Great sound deserves great design. SONIK speakers feature clean lines, modern finishes, and high-quality craftsmanship that enhance any living space. Built with precision and attention to detail, each speaker brings a refined, understated aesthetic that reflects the same care found in its acoustic performance.

DALI SOUND DESIGN PRINCIPLES

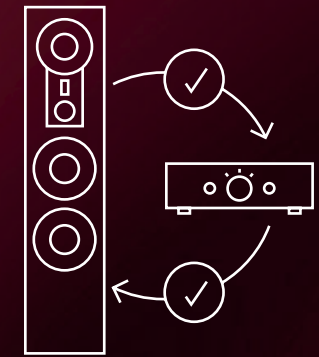
The electro-acoustic design philosophies of the DALI SONIK follow the same DALI Sound Design Principles that drive every speaker that carries the DALI logo.

As such, DALI SONIK incorporates technologies already proven in our existing product ranges, while also introducing refined and evolved versions that push our innovations even further.

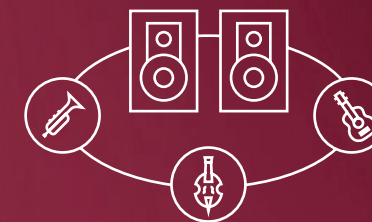
Below, you'll find a detailed walkthrough of our Sound Design Principles.



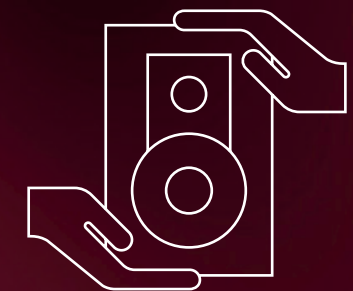
CLARITY



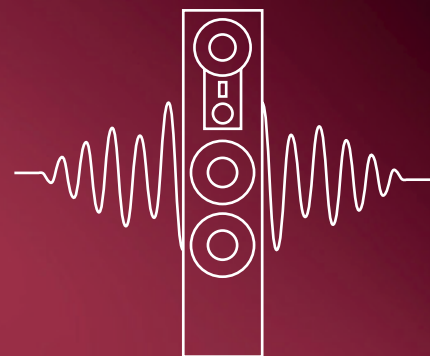
AMPLIFIER OPTIMISED



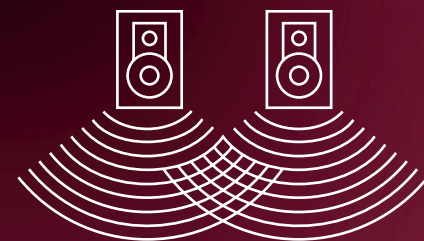
HOLOGRAPHIC
SOUND IMAGING



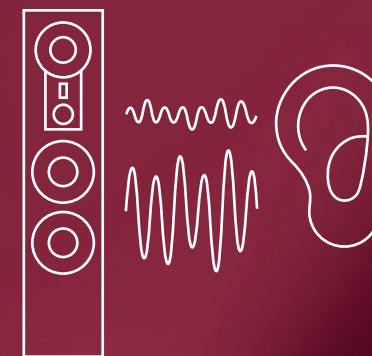
INDIVIDUALLY CRAFTED



LOW LOSS



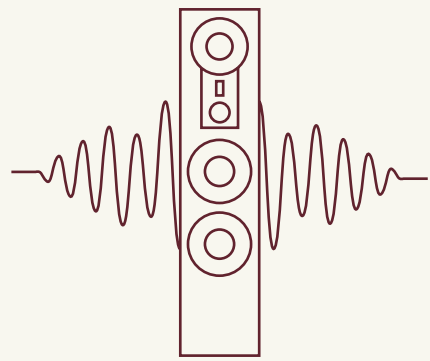
WIDE DISPERSION



TIME COHERENCE



LOW RESONANCE CABINET



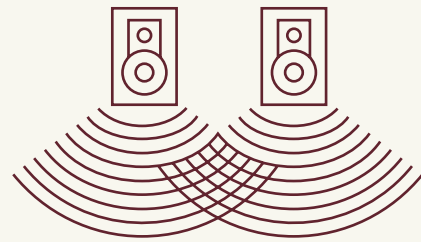
LOW LOSS

The selection of low-loss materials and decisions on construction details are fundamental building blocks in the DALI SONIK and in any DALI loudspeaker for that matter.

Every single aspect in the speaker is designed for low mechanical loss, from the specific placement of the bass ports, the design of the crossover, the cabinet form and materials, the cone- and suspension materials, to the voice coil and magnet motor system.

We significantly manage to reduce the mechanical distortion by dramatically lowering hysteresis and eddy currents by using SMC™ in the pole piece of the bass/midrange drivers.

Through very low mechanical loss, the most fragile sound details, even at very low listening levels, are preserved. This is the only way to obtain an ultimate transparency and 'liveliness' from the speaker, manifested to an unheard-of level. The DALI SONIK will disappear completely in the stereo field, leaving you with only the music to enjoy. No more, no less.

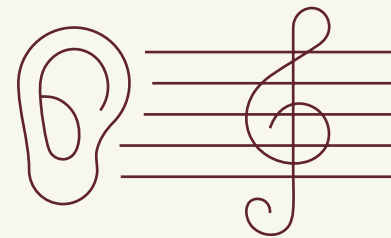


WIDE DISPERSION

DALI makes it easy to integrate loudspeakers into any room. Both the driver materials and geometry incorporated in the SONIK series have been selected to generate a wide dispersion pattern in the listening space. Furthermore, the same principles are applied in the design of the crossover.

Listeners will experience a well-integrated sound, even when seated at a significant off axis angle. This is important as listeners are rarely seated directly in front of loudspeaker when listening to music. An added benefit is significantly reduced harmonic distortion and diffraction as these effects are always stronger in the on-axis response. It's for these reasons that DALI speakers are designed not to be angled inwards.

Optimizing our drive units for an optimum off axis response (which must be, and is a deliberate choice), gives us less ripple on the frequency curve, lower non-harmonic distortion, as well as a guarantee for a better and smoother delivery of energy into the entire room.

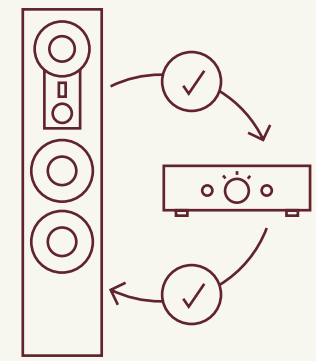


CLARITY

Clarity in the audio signal is obtained by low loss of information in combination with a smooth and seamless reproduction in both the time and frequency domain. To retain such seamlessness, the integration of the drivers has to be perfect.

The success of integrating 'overlapping' drivers depends on numerous combinations of elements, which can only be achieved by carefully optimising the driver not only for perfect frequency response in its main working area, but also at its outer limits. This attention to the roll-off area is one of DALI's specialities and one that is present in all our speaker designs.

The human hearing is particularly sensitive in the mid frequency range - centred around 3,000 Hz. This frequency area is also where most bass/midrange drivers must hand over the signal rendering to the tweeter's frequency range. Any distortion, signal dip, and poor integration of phase behaviour between the two contributors, or any other sort of colouration within this crucial area, will greatly degrade the audio experience.

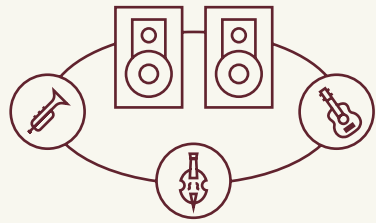


AMPLIFIER OPTIMISED

Providing a stable and extremely linear environment for an amplifier is critical to delivering the best possible sound rendition no matter the amplifier connected.

By delivering an impedance load of such quality as well as a high sensitivity, the DALI SONIK lets any amplifier reproduce the signal exactly as it is – nothing is added, nothing is taken away.

SONIK is easy on the amplifier – but it will tell anything about your amplifier and will play exactly as your amplifier lets it play.

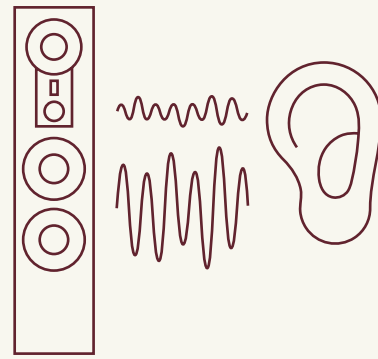


HOLOGRAPHIC SOUND IMAGING

Creating a believable soundstage is all about reproducing every single detail in the audio signal and correct timing. To do this it's crucial to minimise mechanical distortion, dynamic compression and signal loss.

The goal is to make the speaker 'disappear', and reproduce the sound with ultimate transparency, effortlessly and with extreme low levels of distortion. Reproducing an accurate three-dimensionality requires every part of the loudspeaker to work together perfectly to create a fluently stitched together signal in both the time and frequency domain. DALI's time coherence and low-loss technologies ensure a transparent, holographic, three-dimensional soundstage. For us, the key is choosing our building materials with great care, making sure that no signal is lost or changed on its way through the DALI SONIK.

By using only state-of-the-art, DALI-designed and custom-built drivers, the need for frequency correction in the crossover is minimised. This enables us to design a very specific crossover, which together with carefully selected quality components, ensure that the signal loss is close to zero, and will therefore have close to zero impact on the original signal, preserving all the critical details in the signal for the loudspeaker to reproduce accurately.



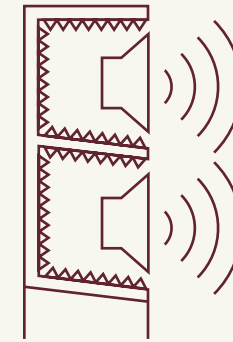
TIME COHERENCE

Ensuring perfect phase between the individual drivers is the key to deliver a realistic 3D sound image.

Timing across the drivers, combined with a perfectly optimised handover from driver to driver is the basis for ultimate high fidelity.

Every custom-made driver in the DALI SONIK is meticulously time-aligned to ensure that even the most microscopic nuances of the musical signal reach the listener's ear at precisely the right moment.

Designed with a full frequency range, wide dispersion, custom-shaped baffle and an advanced enclosure design, we ensure an optimum response as well as perfect phase response profile, from both the drivers but also from the bass reflex system, simplifying the requirement for crossover corrections significantly, and in turn answers back with an extremely natural and realistic reproduction of any genre of audio.



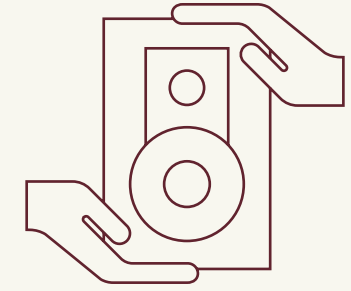
LOW RESONANCE CABINET

A cabinet must support the driver without colouring the sound. We balance damping and bracing to control resonance and airflow. The result is a cabinet that enhances dynamics and musicality while keeping unwanted vibrations in check.

A loudspeaker cabinet surface area is typically far larger than the surface area of the drivers, so minimising cabinet vibration is essential for accurate and natural sound reproduction.

The sophisticated DALI SONIK cabinet construction ensures an inert and non-resonant foundation on which the drivers can perform.

By using a combination of different non-resonant materials, an extremely firm coupling to the drivers and chassis, as well as large ratio between moving mass and cabinet mass – ensures astoundingly low vibrations and colouration from the cabinet.



INDIVIDUALLY CRAFTED

Each DALI loudspeaker is hand-assembled, tested, and signed by a skilled technician.

From cabinet to final electro-acoustic checks, we combine advanced measurement tools with human craftsmanship to ensure consistent, top-tier quality and high quality speakers that are worthy of the DALI logo.

For SONIK, it's no different. SONIK is developed in Denmark, and manufactured at our own factory in Ningbo, China.

DALI SONIK TECHNOLOGIES

- Wide Dispersion soft dome tweeter with aluminium faceplate
- DALI Hybrid Tweeter (SONIK 7 and 9)
- Low-Loss bass and midrange woofers
- Powerful double magnets (SONIK 9)
- Clarity Cone™ Technology - Paper and wood fibre cones
- SMC™ Essential magnet system
- In-house Developed Terminals
- Low Resonance Cabinets
- Dual Flare Bass Reflex Ports
- Smart On-Wall Reflex Port Design
- Aluminium Spike Outriggers
- Dedicated Home Theatre Applications
- KORE/EPIKORE-style logo



DALI SONIK TECHNOLOGIES

LOW-LOSS BASS AND MIDRANGE WOOFERS

At DALI, we strongly believe in reproducing the recorded signal. No more, no less. We continuously research and develop new and optimised ways to lower the losses and distortion of our speakers. Low losses and distortion result in a speaker that reproduces the music in a natural and engaging way.

To achieve this, it's not only necessary to reproduce the frequency contents in the signal, but also the dynamics in all its aspects – ranging from subtle micro-details to high-level bursts. Like all DALI drivers dedicated to reproducing the delicate midrange and bass frequency band, the SONIK woofer features a wood fibre diaphragm. This blend of a fine grain paper pulp, reinforced with wood fibres, creates a stiff, lightweight and well-behaved structure. In combination with a low-loss rubber surround and suspension, the diaphragm reproduces micro details in the signal – unfiltered and with great accuracy. Adding to this, the Clarity Cone™ structure of the membrane keeps diaphragm resonance to a minimum.

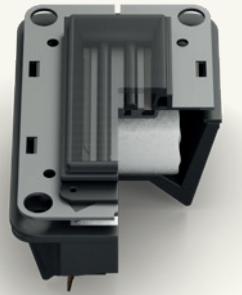
The diaphragm area of the larger drivers in the SONIK series has greater diameter than the typical standard. The 7-inch woofers in the SONIK 3, 7 and 9 are approximately 15% larger when compared to the diaphragm area of the more common 6½ inch size. A larger cone area allows the same sound pressure level to be generated, utilising a lower voice coil excursion.

It also allows a higher maximum sound pressure level and – most importantly – it leads to an effortless reproduction of the dynamics in the music.



DALI HYBRID TWEETER

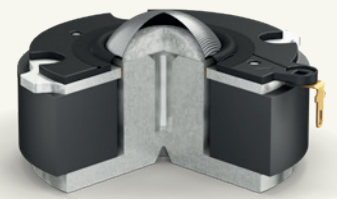
The signature DALI Hybrid Tweeter is a master of wide dispersion, low-loss and high frequency detail. It combines the SONIK soft dome tweeter and a planar magnetostatic tweeter for exceptional high frequency performance.



The DALI Hybrid Tweeter is typically reserved for higher price points like our OPTICON or RUBIKORE series, but now, for the first time ever, DALI is introducing the Hybrid Tweeter technology into a more affordable price range. The Hybrid Tweeter is featured in the SONIK 7 and SONIK 9.

WIDE DISPERSION SOFT DOME TWEETER WITH ALUMINIUM FACEPLATE

The new ultra-light soft dome tweeter has been developed in-house specifically for the SONIK series. It is using a newly designed aluminium faceplate and a 29 mm membrane constructed from an ultra-lightweight weave fabric, optimised for low-loss of energy, low distortion and Wide Dispersion.



Compared to most soft dome tweeters in the market, the DALI dome material is less than half the weight; 0.060 mg per mm² which makes it very easy to drive, even at very low listening levels. This makes it incredibly agile, displaying low level details and effortless accuracy at all listening levels.

The DALI SONIK ultra-lightweight soft dome tweeter is additionally optimised for a larger bandwidth in its lower frequency area. This ensures the optimal handover from the midrange to the tweeter, creating a well-balanced, unforced and very coherent upper midrange.

DALI SONIK TECHNOLOGIES

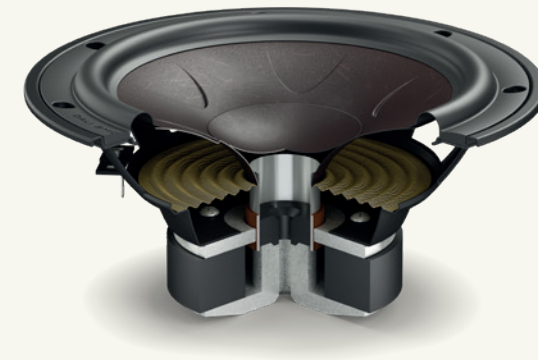
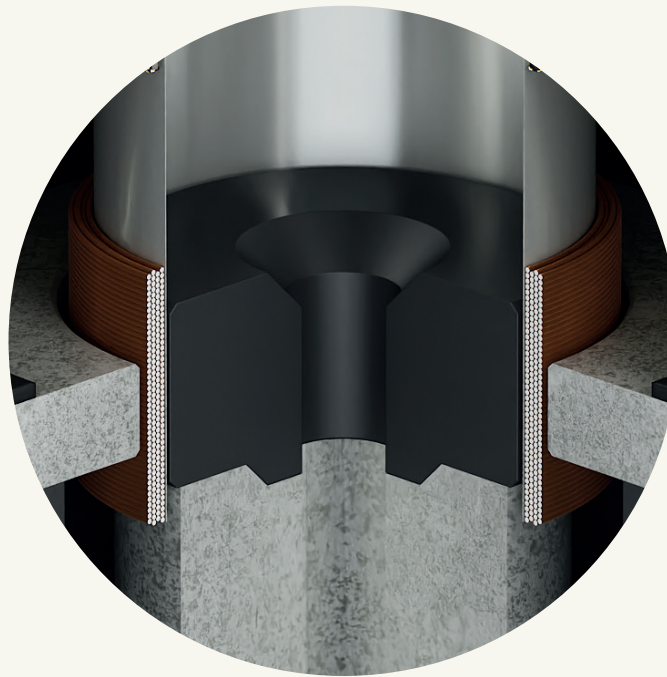
CLARITY CONE™ TECHNOLOGY - PAPER AND WOOD FIBRE CONES

KORE technology, trickled down.

Inspired by the DALI KORE midrange driver and used in our EPIKORE and RUBIKORE, the new Clarity Cone™ Technology paper and wood fibre structure of the SONIK range drivers result in a lightweight yet rigid diaphragm with enhanced resonance suppression for consistent and controlled cone motion.

Clarity is one of the DALI Sound Design Principles and describes the loudspeaker drivers' ability to blend seamlessly with each other, for the most coherent and natural handover from driver to driver.

The Clarity Cone™ structure helps the midrange get a smoother and more uncoloured handover in the upper midrange, making the transition to the tweeter sound more natural and realistic.



SMC™ ESSENTIAL MAGNET SYSTEM

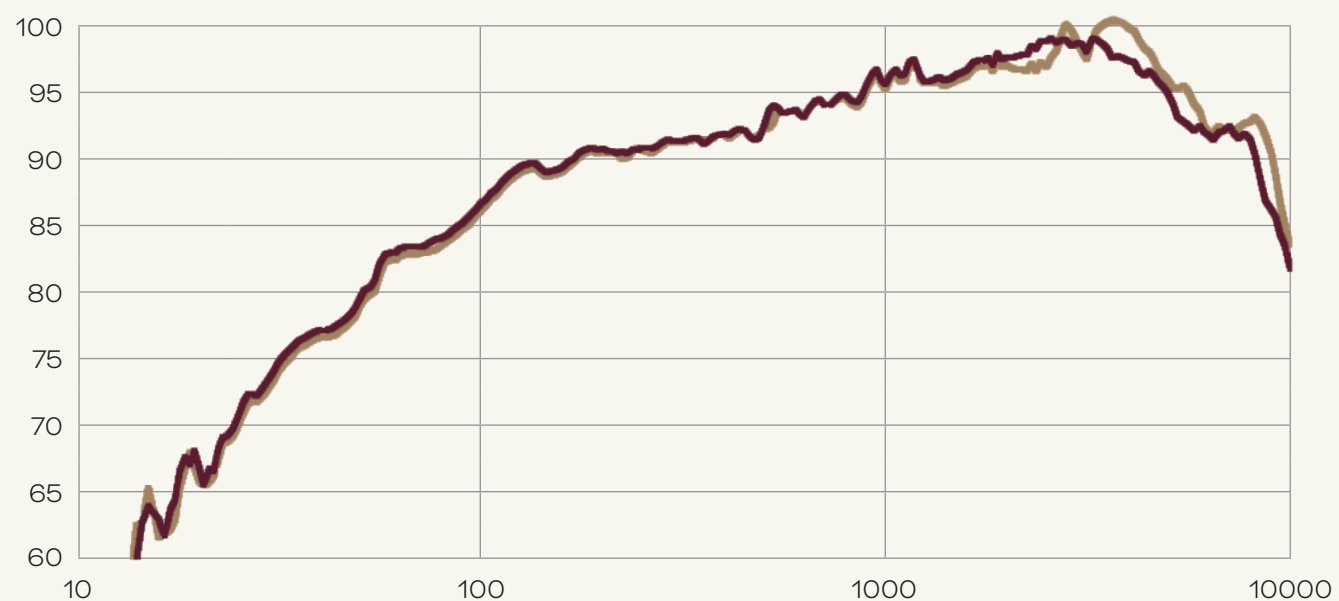
The magnet systems in all SONIK models are benefitting from our patented SMC™ magnet material. The magnet system comprises a large ferrite ring magnet that surrounds a pole piece made from a unique combination of iron and SMC™.

Using iron for just the base of the pole piece with a 10 mm SMC™ disc on top means the iron's negative effects are minimised. The SMC™ disc is placed right in the middle of the voice coil working region to ensure its maximum effect and results in a greatly improved flux linearity. The use of the SMC™ disk also greatly reduces distortion caused by hysteresis and eddy currents.

These combined improvements in the magnet motor system enable the SONIK series to offer benchmark low distortion figures for the price range, and will leave the listener with a relaxed, detailed and entertaining midrange performance.

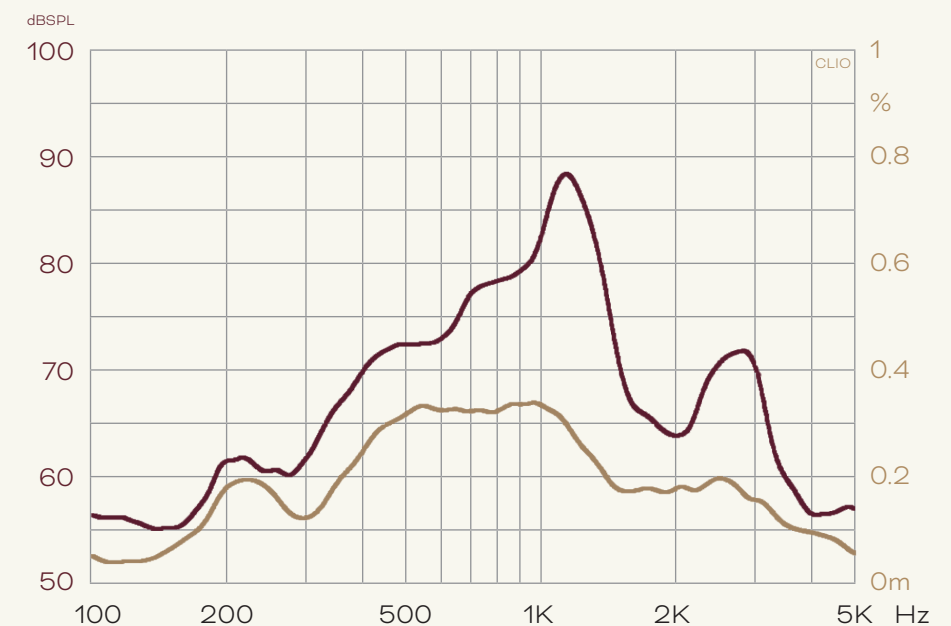
The SMC disk on top of the iron pole piece helps to dramatically lower 3rd order harmonic distortion compared to a similar DALI woofer model based on a pure iron pole piece.

CLARITY CONE™ MEMBRANE STRUCTURE



— With Clarity Cone™
— Without Clarity Cone™

SMC™ ESSENTIAL MAGNET SYSTEM



— Iron pole piece
— Iron and SMC™ pole piece

DALI SONIK TECHNOLOGIES

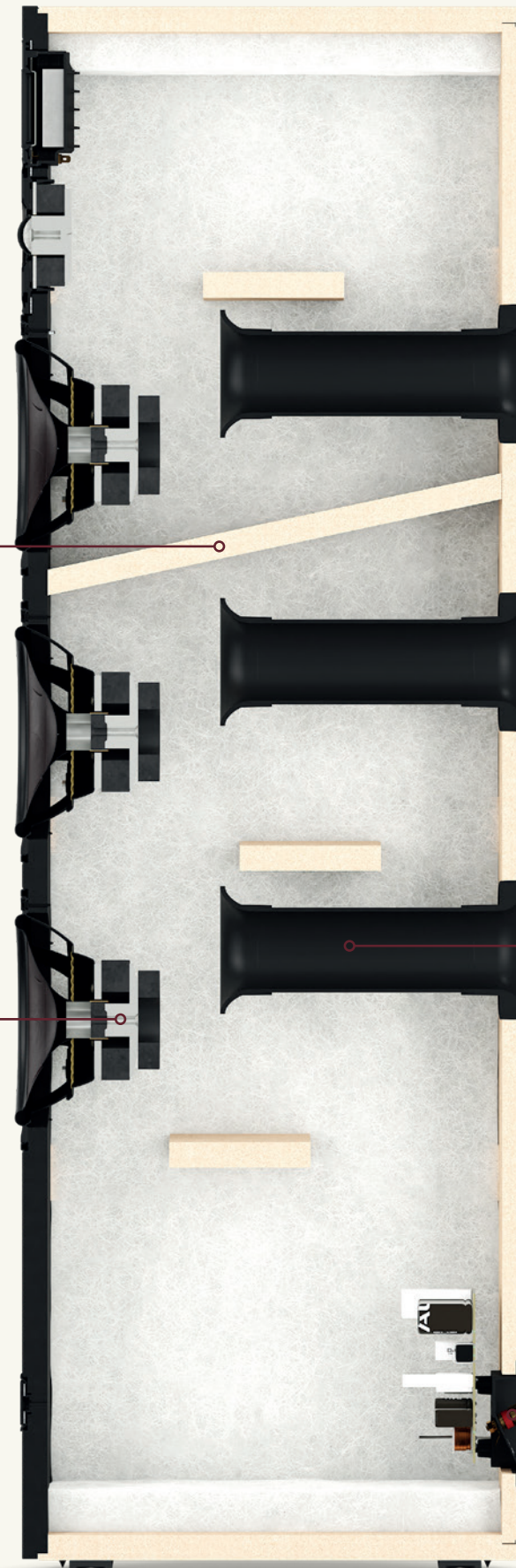
LOW RESONANCE CABINETS

Constructed from CNC-machined MDF board and dressed in carefully selected high-grade laminates, the cabinet forms the solid base for the speaker. The floor-standing cabinets employ a highly rigid construction, with solid bracing across the inside of the cabinet for reinforcement. This contributes to the stiffness and practically eliminate panel resonance. To optimise timing, the speakers are fitted with acoustic damping material internally along the sides, top and bottom - but not on the rear side of the front baffle. This creates a more direct contact between woofer and bass port. The audible result is a more precise bass and increased 'attack' in the midrange.

On the SONIK 9, the woofers are mounted in front of separate chambers, for optimal tuning and a resonance-free environment.

POWERFUL DOUBLE MAGNETS (SONIK 9)

Exclusively for SONIK 9, the 7-inch woofers feature powerful double magnets. The addition of a new powerful double magnet system helps to focus the magnetic field - resulting in lower losses, extra dynamic headroom and class-leading sound reproduction.



ALUMINIUM SPIKE OUTRIGGERS

Inspired by our EPIKORE high-end speakers, all the floor-standing models in the SONIK range feature adjustable aluminium outrigger feet. These allow you to mount and adjust the included spikes or the hemispherical rubber feet to the outriggers and give the SONIK floor-standing cabinets a solid foundation for it to perform optimally on any type of floor.

DUAL FLARE BASS REFLEX PORTS

The bass ports are placed on the rear on most of the models, optimising room integration by utilising the wall for improved bass performance. The bass ports are Dual Flare designs, inspired by those used in the DALI EPICON speakers, convex-tapered in both ends to minimise port turbulence. On the SONIK CINEMA, the bass ports are placed on the front to support placement in TV furniture. This is achieved without losing the all-important 'easy placement' for which DALI has become renowned across its speaker series.

IN-HOUSE DEVELOPED TERMINALS

The speaker terminals on DALI SONIK are developed and designed in-house and are not only stunning-looking terminals but will also offer a good and solid connection whether you are using bare wire leads, banana plugs or spades.

DALI SONIK TECHNOLOGIES



SMART ON-WALL REFLEX PORT DESIGN

The SONIK ON-WALL employs an ingenious reflex port architecture. The reflex port exits are in the loudspeaker cabinet rear panel and engineered to vent downwards in parallel to the rear wall.

This arrangement means the wall surface effectively becomes integral to the port tuning and exit flaring. It helps the SONIK ON-WALL to reach surprisingly into the lowest frequencies for unbelievable bass extension which makes it both suitable for music listening on it's own or as a part of a multichannel system.



DEDICATED HOME THEATRE APPLICATIONS

Any of the SONIK loudspeakers can be configured to work in a high-quality home theatre setup. Although the home theatre star of the series is the SONIK CINEMA loudspeaker.

Configurable for both landscape and portrait orientation, and with a rotatable front grille logo, the SONIK CINEMA can be used for both left, centre, right and surround (LCRS) applications.



DALI SONIK APPLICATIONS

DALI SONIK gives you more than just loudspeakers - it delivers an upgrade to your everyday listening. With technology from DALI's flagship KORE series, including patented SMC™ and Clarity Cone™ drivers, SONIK reveals layers in your music and movies you've never heard before.

Each model offers exceptional performance - deep, rich bass, a clear and articulate midrange, and finely detailed highs. From compact bookshelf speakers to powerful floorstanders, SONIK is designed to fit your space and your style. It blends cutting-edge sound with modern aesthetics, making high-fidelity audio more accessible than ever - bringing cinema-quality sound and true musicality into every home.



DALI SONIK 1

With SONIK 1, you get full, detailed sound in an ultra-compact design featuring a 29 mm ultra-light soft dome tweeter and a 5¼-inch wood fibre SMC™ and Clarity Cone™ woofer. Its small cabinet offers a perfect balance of bass performance and space efficiency, making it ideal for small rooms, shelf, stand, or wall mounting.

DALI SONIK 3

SONIK 3 gives you monitor-level coherence and precision with the richness of a larger speaker. Its 7-inch SMC™ and Clarity Cone™ woofer and 29mm ultra-light soft dome tweeter deliver crisp highs, detailed mids, and well-timed bass - so you can enjoy immersive, high-end sound whether it's on a stand, shelf, or in furniture.



DALI SONIK 5

With SONIK 5, you enjoy high-end sound without sacrificing space. Its slim, elegant design fits seamlessly into your home while packing powerful technology: dual 5¼-inch SMC™ and Clarity Cone™ woofers plus a wide-bandwidth 29 mm tweeter. The result - deep bass, clear mids, and airy highs that make your music, movies, and entertainment unforgettable.

DALI SONIK 7

SONIK 7 delivers high-end performance for medium to large rooms. With two 7-inch SMC™ and Clarity Cone™ woofers and a Hybrid Tweeter, it gives you deep bass, articulate mids, and detailed highs. Perfectly suited for music or movies, SONIK 7 stands out in the SONIK series for natural, lifelike sound in any setup.

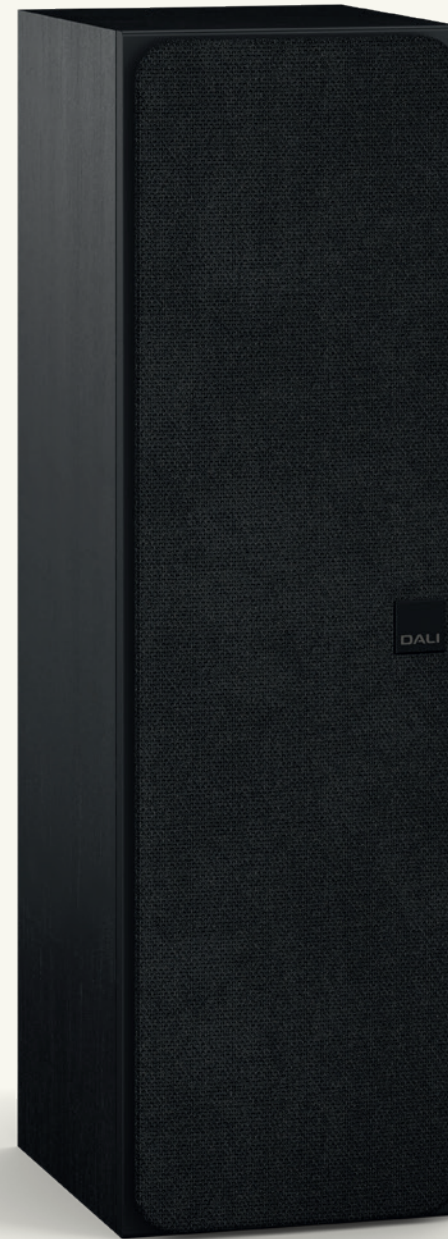
DALI SONIK 9

Designed for large rooms, SONIK 9 transforms your listening space into a high-end soundstage. Three 7-inch SMC™ and Clarity Cone™ woofers plus a Hybrid Tweeter bring you thunderous bass, detailed mids, and sparkling highs, creating expansive, immersive sound for your music and movies. It's the ultimate SONIK experience.



DALI SONIK CINEMA

The SONIK CINEMA is your key to a seamless, immersive home theatre experience. Matched perfectly with any SONIK speaker, it features a 29 mm ultra-light soft dome tweeter and dual 5¼ inch SMC™ Clarity Cone™ woofers. Place it as LCR or surround, horizontally or vertically - enjoy clear, precise sound every time.



DALI SONIK ON-WALL

SONIK ON-WALL brings you big, immersive sound from a slim, discreet design. Its 29 mm soft dome tweeter and 5¼-inch wood fibre SMC™ and Clarity Cone™ woofer fill your room with rich, detailed audio, while the down-firing bass port delivers deep lows - perfect for your stereo, surround, or space-conscious setup.



DALI SONIK

TECHNICAL SPECIFICATIONS

	SONIK 1	SONIK 3	SONIK 5	SONIK 7	SONIK 9	SONIK ON-WALL	SONIK CINEMA
Frequency range	51 - 26,000 Hz ±3 dB	47 - 26,000 Hz ±3 dB	39 - 26,000 Hz ±3 dB	36 - 30,000 Hz ±3 dB	34 - 30,000 Hz ±3 dB	55 - 26,000 Hz ±3 dB	46 - 26,000 Hz ±3 dB
Sensitivity	86 dB @ 1 m for 2.83 V	87 dB @ 1 m for 2.83 V	88 dB @ 1 m for 2.83 V	88.5 dB @ 1 m for 2.83 V	90 dB @ 1 m for 2.83 V	87 dB @ 1 m for 2.83 V	89,5 dB @ 1 m for 2.83 V
Nominal impedance	6 ohm	6 ohm	6 ohm	6 ohm	4 ohm	6 ohm	6 ohm
Maximum SPL	106 dB	108 dB	108 dB	110 dB	111 dB	107 dB	109 dB
Crossover frequency	2,800 Hz	2,300 Hz	2,200 Hz	2,300 / 14,000 Hz	400 / 2,100 / 14,000 Hz	2,400 Hz	2,200 Hz
Crossover principle	2-way	2-way	2-way	2½-way	2½ + ½-way	2-way	2-way
Recommended amplifier power	25 - 100 Watt	25 - 150 Watt	30 - 150 Watt	30 - 180 Watt	50 - 300 Watt	25 - 100 Watt	25 - 150 Watt
High frequency driver(s)	1 × 29 mm low loss soft dome	1 × 29 mm low loss soft dome	1 × 29 mm low loss soft dome	17 × 45 mm planar magnetostatic tweeter 1 × 29 mm low loss soft dome	17 × 45 mm planar magnetostatic tweeter 1 × 29 mm low loss soft dome	1 × 29 mm low loss soft dome	1 × 29 mm low loss soft dome
High frequency diaphragm	Soft woven fabric	Soft woven fabric	Soft woven fabric	Planar magnetostatic Soft woven fabric	Planar magnetostatic Soft woven fabric	Soft woven fabric	Soft woven fabric
Low/Mid frequency driver(s)	1 × 5¼-inch	1 × 7-inch	2 × 5¼-inch	2 × 7-inch	3 × 7-inch	5¼-inch	2 × 5¼-inch
Low/Mid frequency diaphragm	Clarity Cone™ paper and wood fibre	Clarity Cone™ paper and wood fibre	Clarity Cone™ paper and wood fibre	Clarity Cone™ paper and wood fibre	Clarity Cone™ paper and wood fibre	Clarity Cone™ paper and wood fibre	Clarity Cone™ paper and wood fibre
Connection input(s)	Single wire	Single wire	Single wire	Single wire	Single wire	Single wire	Single wire
Enclosure type	Bass reflex	Bass reflex	Bass reflex	Bass reflex	Bass reflex	Bass reflex	Bass reflex
Bass reflex tuning frequency	51 Hz	46 Hz	43 Hz	39 Hz	35 Hz	50 Hz	46 Hz
Other features	Integrated wall bracket	N/A	N/A	N/A	N/A	LORS	LORS
Recommended placement	Stand/shelf	Stand/shelf	Floor	Floor	Floor	Wall	Stand/shelf
Recommended distance from rear wall	1 - 50 cm	5 - 50 cm	15 - 100 cm	20 - 100 cm	20 - 120 cm	0 - 10 cm	0 - 50 cm
Dimensions (H × W × D)	274 × 162 × 231 mm 10.8 × 6.4 × 9.1 inches	350 × 200 × 306 mm 13.7 × 7.8 × 12.1 inches	826 × 162 × 270 mm 32.5 × 6.3 × 10.6 inches	1,006 × 200 × 330 mm 39,6 × 7.8 × 13 inches	1,126 × 214 × 376 mm 44.3 × 8.4 × 14.8 inches	385 × 245 × 123 mm 15.2 × 9.7 × 4.8 inches	170 × 571 × 214 mm 6.7 × 22.5 × 18.4 inches
Weight incl. grille	4.1 kg 9.03 lb	6.5 kg 14.13 lb	10.8 kg 23.80 lb	16.2 kg 35.71 lb	24.6 kg 54.23 lb	4.9 kg 10.80 lb	7.90 kg 17.41 lb
Shipping weight	10 kg (pair) 22.04 lb (pair)	15.1 kg (pair) 33.28 lb (pair)	26.6 kg (pair) 58.64 lb (pair)	19.7 kg 43.43 lb	30.1 kg 66.35 lb	10.9 kg (pair) 24.03 lb (Pair)	9.6 kg 21.16 lb
Finishes	Black Ash White Walnut Natural Oak	Black Ash White Walnut Natural Oak	Black Ash White Walnut Natural Oak	Black Ash White Walnut Natural Oak	Black Ash White Walnut Natural Oak	Black Ash White Walnut Natural Oak	Black Ash White Walnut Natural Oak
Accessories (included)	Front grilles Rubber feet Rubber pads Document pack	Front grilles Rubber pads Document pack	Front grilles Rubber pads Spikes Lock nuts Hemispherical rubber feet Spike outriggers Spike outrigger screws Toolkit Document pack	Front grilles Rubber pads Spikes Lock nuts Hemispherical rubber feet Spike outriggers Spike outrigger screws Toolkit Document pack	Front grilles Rubber pads Spikes Lock nuts Hemispherical rubber feet Spike outriggers Spike outrigger screws Toolkit Document pack	Front grilles Rubber pads Document pack	Front grille Rubber pads Document pack

All technical specifications are subject to change without notice.

DALI SONIK SERIES

SETTING A NEW SONIK STANDARD

